

**U.S. DEPARTMENT OF THE INTERIOR  
BUREAU OF INDIAN AFFAIRS - ROADS  
MIDWEST REGION**

**WAGIDAAKI DR & OOKWEMIN LOOP  
WALKWAYS**

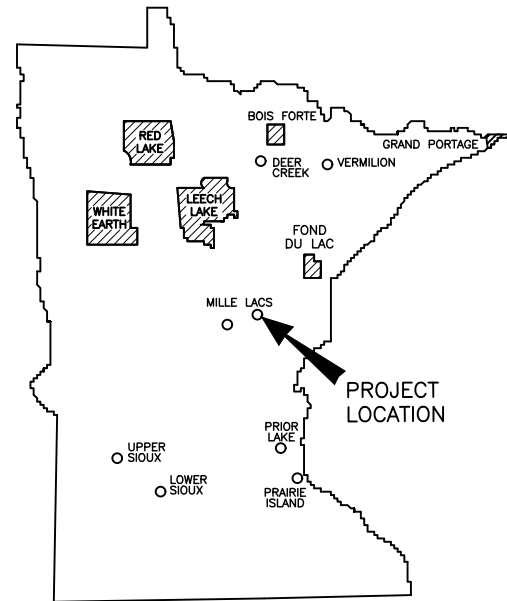
**PROJECT I.D. NO. F53-41029**

**TTP ROUTE NO. 94**

**MILLE LACS BAND OF OJIBWE  
MILLE LACS COUNTY, MINNESOTA**

**BITUMINOUS WALKWAYS, CONCRETE WALKWAYS**

**PROJECT LENGTH      6,740 FEET**



**MILLE LACS COUNTY**

**STATE OF MINNESOTA**

**SEC 16, 17, 19, 20, 21 T 43N, R 27W, Fourth P.M.**

Survey Note: RTK GNSS, Coordinate System MN County, Zone Mille Lacs, Geoid 12A-MN

**LEGEND OF SYMBOLS**

TREE LINE	
EXISTING ROADWAY	
GATE VALVE	
POWER POLE	
GUY WIRE	
HYDRANT	
SIGN	
POWER BOX	
CONTROL POINT	
MANHOLE	
SINGLE TREE	
LIGHT POLE	
CATCH BASIN	

**DESIGN DATA**

DESIGN SPEED                      15 MPH  
TOPOGRAPHY                      ROLLING

**INDEX OF SHEETS**

SHEET NO. 1	TITLE, LEGEND & LOCATION MAP
SHEET NO. 2	QUANTITIES, NOTES & UTILITIES
SHEET NO. 3	MISCELLANEOUS QUANTITIES
SHEET NO. 4-5	TYPICAL SECTIONS
SHEET NO. 6	DETAILS SHEET
SHEET NO. 7 - 9	EROSION CONTROL
SHEET NO. 10 - 12	SIGNING & TRAFFIC CONTROL
SHEET NO. 13 - 22	PLAN & PROFILE SHEETS
SHEET NO. 23 - 54	CROSS SECTIONS - WAGIDAAKI DR
SHEET NO. 55 - 61	CROSS SECTIONS - OOKWEMIN LOOP
SHEET NO. 62 - 63	EARTH WORK TABULATION SHEET

DESIGN IS IN ACCORDANCE WITH "A POLICY ON GEOMETRIC DESIGN OF HIGHWAYS AND STREETS," 2004 (AASHTO). EXCEPT AS PROVIDED FOR IN THE SPECIAL PROVISIONS, ALL WORK SHALL BE ACCOMPLISHED ACCORDING TO THE "STANDARD SPECIFICATIONS FOR CONSTRUCTION OF ROADS AND BRIDGES ON FEDERAL HIGHWAYS PROJECTS FP-03," AND STATE OF MINNESOTA, "STANDARD SPECIFICATIONS FOR CONSTRUCTION," 2020 EDITION, AND THE LATEST "SUPPLEMENTAL SPECIFICATIONS" TO THE 2020 EDITION.



**LOCATION MAP  
N.T.S.**

**CONTRACTOR SHALL VERIFY ALL PUBLIC UTILITIES PRIOR TO START OF CONSTRUCTION**

**U.S. DEPARTMENT OF THE INTERIOR - BUREAU OF INDIAN AFFAIRS**

**MIDWEST REGION                      MIDWEST REGION**

RECOMMENDED FOR APPROVAL:	APPROVED:
REGIONAL ROADS ENGINEER                      DATE	REGIONAL DIRECTOR                      DATE

SHEET NAME  
TITLE, LEGEND AND LOCATION MAP

RESERVATION  
MILLE LACS

BIA REGION  
MIDWEST

FED. ROAD REG. NO.  
5

PROJECT I.D. NO.  
F53-41029

SHEET NO.  
1 of 63

GENERAL NOTES

1. ITEM IS PAID AS PLAN QUANTITY, NO ADDITIONAL COMPENSATION SHALL BE ALLOWED
2. THE LOCATION OF EXISTING UTILITIES ARE SHOWN FOR INFORMATION ONLY, AND REPRESENT THE BEST KNOWLEDGE OF THE ENGINEER. THE CONTRACTOR SHALL COORDINATE UTILITY LOCATIONS WITH THE APPROPRIATE UTILITY COMPANIES, OR UTILITY ORGANIZATIONS, AND ARRANGE FOR REMOVAL, RELOCATION, OR SPECIAL PROTECTION OF ALL UTILITIES THAT ARE LOCATED WITHIN THE CONSTRUCTION LIMITS PRIOR TO THE START OF CONSTRUCTION.
3. THE CONTRACTOR SHALL BE REQUIRED TO MAINTAIN TRAFFIC ON PUBLIC ROADWAYS AT ALL TIMES DURING CONSTRUCTION. ACCESS TO PRIVATE PROPERTIES SHALL ALSO BE MAINTAINED AT ALL TIMES. THE COST OF THIS WORK SHALL BE CONSIDERED INCIDENTAL TO THE CONTRACT AND NO ADDITIONAL COMPENSATION SHALL BE ALLOWED.
4. THE CONTRACTOR SHALL REMOVE & BANK MAIL BOXES AND REPLACE WHEN WORK IS COMPLETE. THE COST OF THE WORK SHALL BE CONSIDERED INCIDENTAL.
5. ALL CONTRACTOR, SUBCONTRACTOR AND UTILITY EMPLOYEES SHALL WEAR SAFETY EQUIPMENT IN ACCORDANCE WITH <u>OSHA</u> REGULATIONS.
6. ALL EXCESS EXCAVATION, DEBRIS, & RUBBISH RESULTING FROM CONSTRUCTION OPERATIONS SHALL BE REMOVED FROM PROJECT SITE AND DISPOSED OF BY THE CONTRACTOR. THE CONTRACTOR SHALL MAKE ALL ARRANGEMENTS AND ASSUME FULL RESPONSIBILITY FOR THE DISPOSAL OF THE MATERIALS AT A LOCATION WHICH IS PRE-APPROVED BY THE TRIBE. THIS WORK SHALL BE CONSIDERED INCIDENTAL TO THE CONTRACT AND NO ADDITIONAL COMPENSATION SHALL BE ALLOWED.
7. TOPSOIL SHALL BE PLACED AT A DEPTH OF 4", LOOSE.
8. ALL DISTURBED AREAS, NOT OTHERWISE SURFACED, SHALL BE SEEDED AND FERTILIZED.
9. ALL JOINTS BETWEEN NEW AND OLD PAVEMENT SHALL BE SAW CUT AND TACKED. SAWCUTTING SHALL BE PAID FOR AS SAWING BITUMINOUS PAVEMENT BY THE LINEAL FOOT.

BASIS OF ESTIMATED QUANTITIES

WEARING COURSE MIXTURE.....	115 lbs./sq.yd/inch
NON WEARING COURSE MIXTURE.....	115 lbs./sq.yd/inch
AGGREGATE BASE, CLASS 5.....	145 lbs/cu. foot
BITUMINOUS MATERIAL FOR TACK COAT.....	0.05 gallons/sq. yd
SEEDING HAS BEEN COMPUTED AT 10% ABOVE ACTUAL AREA.	
WOOD FIBER HAS BEEN COMPUTED AT 5% ABOVE ACTUAL AREA.	

STATEMENT OF ESTIMATED QUANTITIES

ITEM NUMBER	NOTES	MINNESOTA STATE SPECIFICATION ITEM	UNIT	ESTIMATED QUANTITY
2021.501		MOBILIZATION	LUMP SUM	1
2101.505		CLEARING	ACRE	2.0
2101.505		GRUBBING	ACRE	2.0
2104.501		REMOVE CURB & GUTTER	LIN FT	60
2104.503		SAWING BITUMINOUS PAVEMENT (FULL DEPTH)	LIN FT	310
2104.503		SAWING CONCRETE PAVEMENT (FULL DEPTH)	LIN FT	20
2104.518		REMOVE CONCRETE PAVEMENT	SQ FT	80
2104.602		RELOCATE STREET LIGHT	EACH	1
2104.602		RELOCATE SIGN	EACH	3
2105.607	P	COMMON EXCAVATION	CU YD	1678.37
2105.607		MUCK EXCAVATION	CU YD	1442
2105.607		COMMON BORROW (CV)	CU YD	3008.39
2123.510	C	DOZER	HOUR	20
2211.509		AGGREGATE BASE CLASS 5	TON	1366
2360.509		TYPE SP 12.5 WEARING COURSE MIX (2,B)	TON	700
2501.502		24" RC SAFETY APRON	EACH	2
2501.503		24" RC PIPE CULVERT	LIN FT	20
2521.518	A	5" CONCRETE WALK	SQ FT	9870
2531.503	A	CONCRETE CURB & GUTTER DESIGN B618	LIN FT	60
2531.618	A	TRUNCATED DOMES	SQ FT	216
2545.602		RELOCATE TELEPHONE PED	EACH	1
2563.601		TRAFFIC CONTROL	LUMP SUM	1
2564.518		SIGN PANELS TYPE C	SQ FT	57
2573.502		STORM DRAIN INLET PROTECTION	EACH	2
2573.503		SILT FENCE, TYPE PA	LIN FT	6015
2575.501	B	TURF ESTABLISHMENT	LUMP SUM	1
2575.504		EROSION CONTROL BLANKETS CATEGORY 4	SQ YD	700
2582.518		CROSSWALK - PAINT	SQ FT	950

- NOTES: (P) INDICATES PLAN QUANTITY  
 (A) SEE PEDESTRIAN CURB RAMP STANDARD PLANS 5-297.250 FOR RAMP DESIGN  
 (B) ALL DISTURBED AREAS, NOT OTHERWISE SURFACED, SHALL HAVE TOPSOIL, SEED AND FERTILIZER  
 (C) DOZER HOURS SHALL BE USED FOR MINOR GRADING WORK AS DIRECTED BY THE ENGINEER

MINNESOTA DEPARTMENT OF TRANSPORTATION STANDARD PLATES	
PLATE NO.	DESCRIPTION
3000 M	REINFORCED CONCRETE PIPE
3022 C	PRECAST CONCRETE SAFETY APRON
7038 A	DETECTABLE WARNING SURFACE TRUNCATED DOMES
7100 H	CONCRETE CURB AND GUTTER (DESIGN B)
8000 I	TEMPORARY CHANNELIZERS-TYPE A

**WARNING**  
 LOCATION OF UNDERGROUND UTILITIES  
 TO BE VERIFIED BY CONTRACTOR  
 CALL BEFORE DIGGING

**REQUIRED BY LAW**  
**GOPHER STATE ONE CALL**  
**1-800-252-1166**  
 TOLL FREE

www.gopherstateonecall.org

UTILITIES

TRIBAL CONTACT  
 MIKE MOILANEN  
 DIRECTOR OF PLANNING & PROJECT MANAGEMENT  
 MILLE LACS BAND OF CHIPPEWA  
 PHONE: 320-532-7438

---

ARVIG COMMUNICATIONS  
 PHONE: 888-992-7844

SHEET NAME

QUANTITIES, NOTES & UTILITIES

RESERVATION

MILLE LACS

BIA REGION

MIDWEST

FED. ROAD REG. NO.

5

PROJECT I.D. NO.

F53-41029

SHEET NO.

2 of 63

CLEARING			
LOCATION	ACRE		
WAGIDAAKI DR	2.0		
TOTAL	2.0	ACRE	

GRUBBING			
LOCATION	ACRE		
WAGIDAAKI DR	2.0		
TOTAL	2.0	ACRE	

AGGREGATE BASE CLASS 5			
LOCATION	TON		
WAGIDAAKI DR (STA. 0+00-2+82.54)	37		
WAGIDAAKI DR (STA. 3+14.77-3+56.60)	7		
WAGIDAAKI DR (STA. 4+05.00-54+54.00)	1117		
OOKWEMIN LOOP (STA. 0+00-12+86.34)	205		
TOTAL	1366	TON	

5" CONCRETE WALK			
LOCATION	SQ FT		
WAGIDAAKI DR (STA 0+00-2+83)	1,416		
WAGIDAAKI DR (STA 3+14.77-3+56.66)	252		
OOKWEMIN LOOP (STA 0+00-12+86.34)	7,722		
HANDICAP RAMPS	480		
TOTAL	9,870	SQ FT	

BITUMINOUS PAVEMENT, TYPE SP 12.5			
LOCATION	WEAR (SPWEB240B)		
WAGIDAAKI DR (STA. 3+14.77-3+56.60)	5		
WAGIDAAKI DR (STA. 4+05.00-54+54.00)	695		
TOTAL	700	TON	

LOCATION	COMMON EXCAVATION	MUCK EXCAVATION	TOPSOIL STRIPPING IN FILL AREAS	EMBANKMENT 25% COMPACTION	COMMON BORROW
	C.Y.	C.Y.	C.Y.	C.Y.	C.Y.
WAGIDAAKI DR	1347.90	0	300	2914.29	1566.39
WAGIDAAKI DR (WETLANDS)	0	1442	0	0	1442.00
OOKWEMIN LOOP	330.47	0	0	6.57	0
TOTAL	1678.37 C.Y.	1442 C.Y.	300 C.Y.	2920.86 C.Y.	3008.39 C.Y.

THE COMMON EXCAVATION AND TOPSOIL STRIPPING ITEMS INCLUDE AN ESTIMATED 920 C.Y. OF TOPSOIL. THE STRIPPING AND REPLACEMENT OF THIS TOPSOIL SHALL BE PAID FOR UNDER THE ITEM OF COMMON EXCAVATION. EXCESS TOPSOIL SHALL BE USED ON SLOPE AREAS.

SAWING BITUMINOUS PAVEMENT (FULL DEPTH)			
LOCATION	LIN FT		
WAGIDAAKI STA 0+33 TO 2+83	250		
WAGIDAKKI STA 3+14 TO 3+74	60		
TOTAL	310	LIN FT	

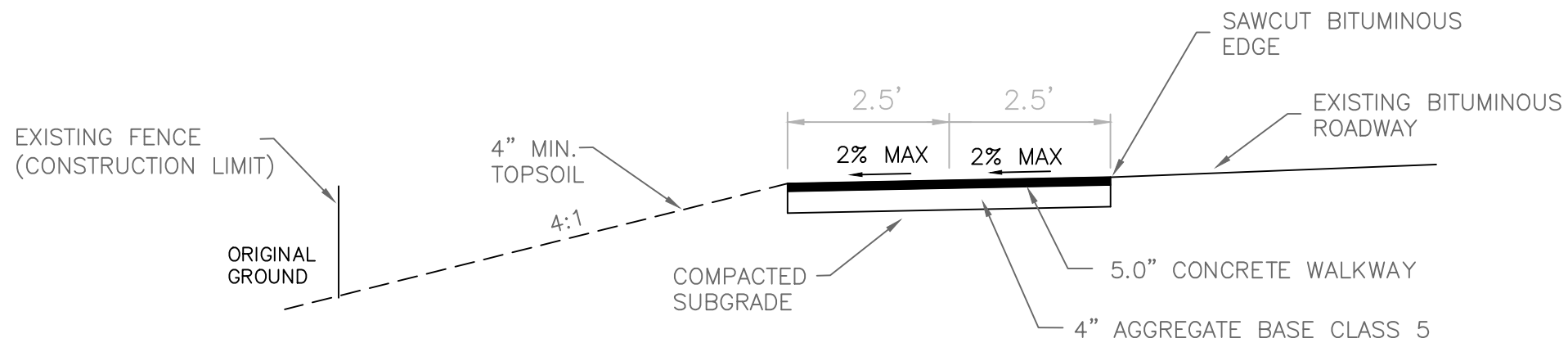
SAWING CONCRETE PAVEMENT (FULL DEPTH)			
LOCATION	LIN FT		
WAGIDAAKI STA 8+70	10		
WAGIDAKKI STA 23+85	10		
TOTAL	20	LIN FT	

SEE EROSION CONTROL SHEET NO. 7-9 FOR QUANTITIES AND LOCATIONS OF SILT FENCE.

SEE PERMANENT & TEMPORARY SIGNING SHEET NO. 10-12 FOR QUANTITIES AND LOCATIONS OF ALL TRAFFIC SIGNS.

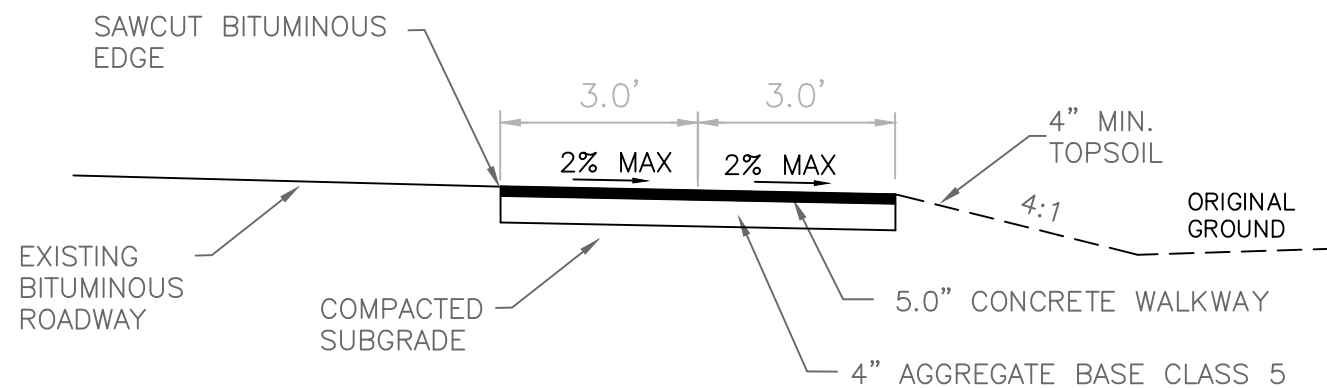
### ABBREVIATIONS

AGGR.	AGGREGATE	MH	MANHOLE
BM	BENCH MARK	M.P.H.	MILES PER HOUR
B.O.P.	BEGINNING OF PROJECT	N	NORTHING
C	CHORD	N.T.S.	NOT TO SCALE
C.I.P.	COMPACTED IN PLACE	P	PLAN QUANTITY
CL	CENTERLINE	PC	POINT OF CURVATURE
CONC.	CONCRETE	P.E.	PRIVATE ENTRANCE
CPCP	CORRUGATED PLASTIC	PI	POINT OF INTERSECTION
	CULVERT PIPE	PT	POINT OF TANGENCY
CSCP	CORRUGATED STEEL	QTY.	QUANTITY
	CULVERT PIPE	R	RADIUS
CSPA	CORRUGATED STEEL PIPE ARCH	RCP	REINFORCED CONCRETE CULVERT PIPE
Da	DEGREE OF CURVE	RD.	ROAD
E	EASTING	RHF	RIGHT HAND FORWARD
E	EXTERNAL	RT.	RIGHT
ELEV.	ELEVATION	ST.	STREET
EMB.	EMBANKMENT	STA	STATION
E.O.P.	END OF PROJECT	T	TANGENT
E.S.	END SECTION	TYP.	TYPICAL
EXC.	EXCAVATION	VC	VOLUME OF CUT
FERT.	FERTILIZER	VF	VOLUME OF FILL
FT.	FEET	VPC	VERTICAL POINT OF CURVATURE
F & I	FURNISH AND INSTALL	VPI	VERTICAL POINT OF INTERSECTION
GV	GATE VALVE	VPT	VERTICAL POINT OF TANGENCY
HWY.	HIGHWAY	W/	WITH
I	DELTA ANGLE		
I.E.	INVERT ELEVATION		
K	RATE OF VERTICAL CURVE		
L	LENGTH OF CURVE		
LHF	LEFT HAND FORWARD		
LT.	LEFT		
M	MIDDLE ORDINATE		
MAX.	MAXIMUM		
MIN.	MINIMUM		



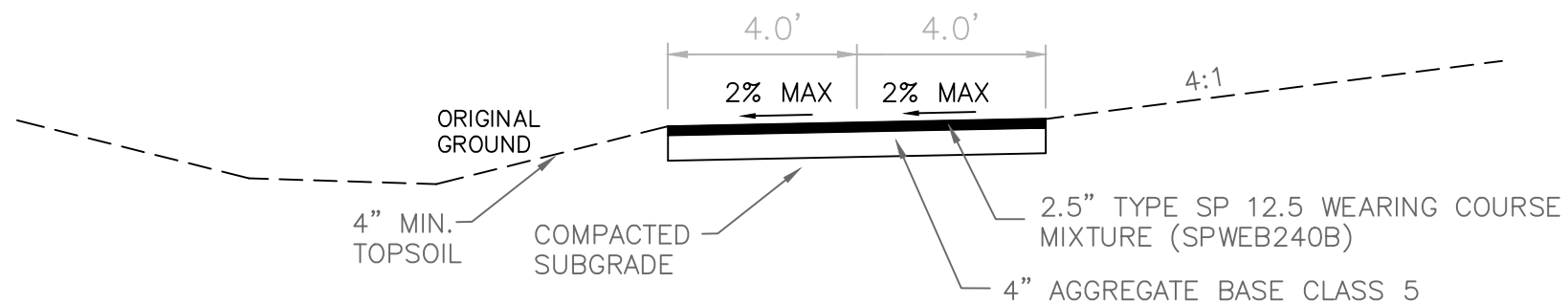
TYPICAL FINISHED CONCRETE WALKWAY

N.T.S  
WAGIDAAKI TRAIL  
STA 0+00 TO STA 2+82.54



TYPICAL FINISHED BITUMINOUS WALKWAY

N.T.S  
WAGIDAAKI TRAIL  
STA 3+14.77 TO STA 3+56.60



TYPICAL FINISHED BITUMINOUS WALKWAY

N.T.S  
WAGIDAAKI TRAIL

WAGIDAAKI TRAIL  
STA 4+05.00 TO STA 8+81.34  
STA 9+11.27 TO STA 11+42.00  
STA 12+76.00 TO STA 13+39.00  
STA 15+94.00 TO STA 21+00.00  
STA 22+95.00 TO STA 23+43.60  
STA 23+73.95 TO STA 28+70.00  
STA 30+87.00 TO STA 35+49.25  
STA 46+75.74 TO STA 54+54.00

SHEET NAME

TYPICAL SECTIONS

RESERVATION

MILLE LACS

BIA REGION

MIDWEST

FED. ROAD REG. NO.

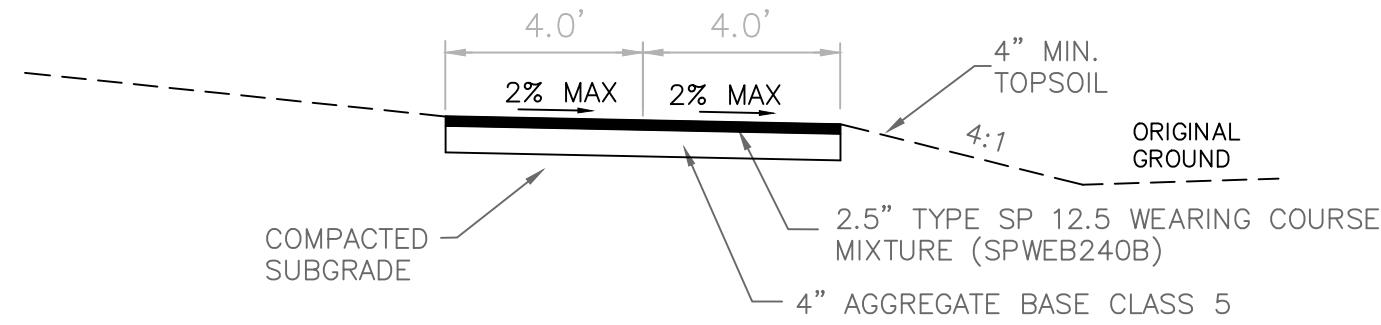
5

PROJECT I.D. NO.

F53-41029

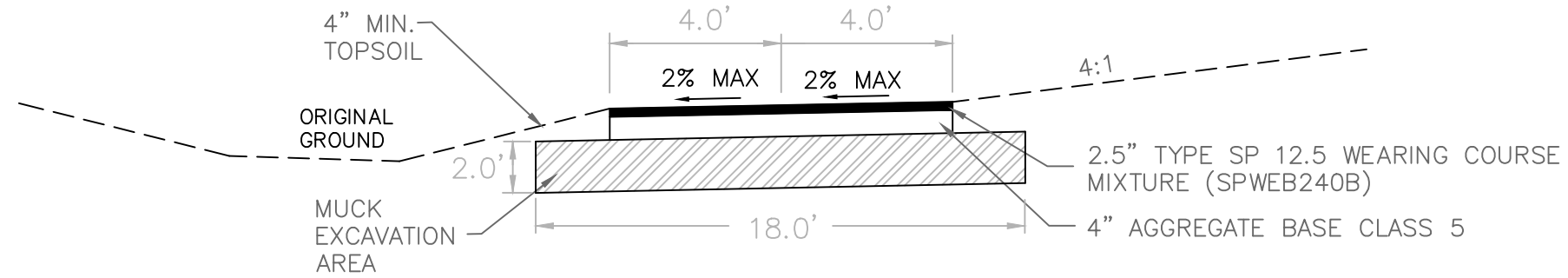
SHEET NO.

4 of 63



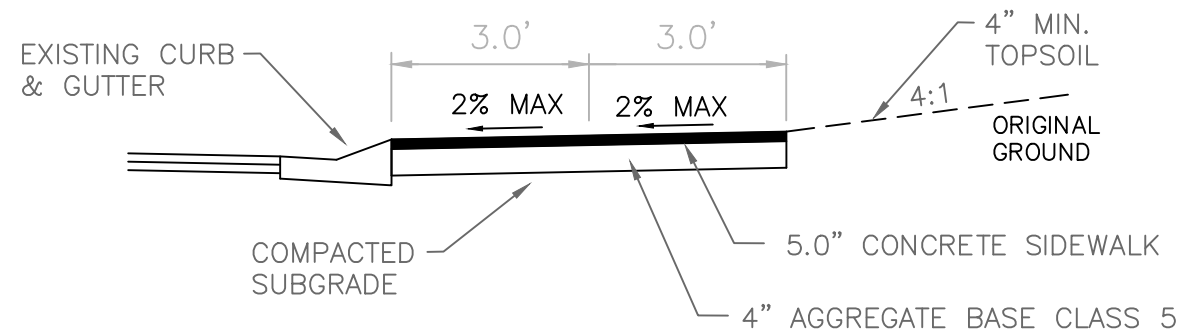
TYPICAL FINISHED BITUMINOUS WALKWAY

N.T.S  
 WAGIDAAKI TRAIL  
 STA 35+74.05 TO STA 46+51.00



TYPICAL FINISHED BITUMINOUS WALKWAY  
 (WETLAND AREAS)

N.T.S  
 WAGIDAAKI TRAIL  
 STA 11+42.00 TO STA 12+76.00  
 STA 13+39.00 TO STA 15+94.00  
 STA 21+00.00 TO STA 22+95.00  
 STA 28+70.00 TO STA 30+87.00



TYPICAL CONCRETE WALKWAY

N.T.S  
 OOKWEMIN LOOP WALKWAY  
 STA 0+00 TO STA 12+86.34

SHEET NAME  
 TYPICAL SECTIONS

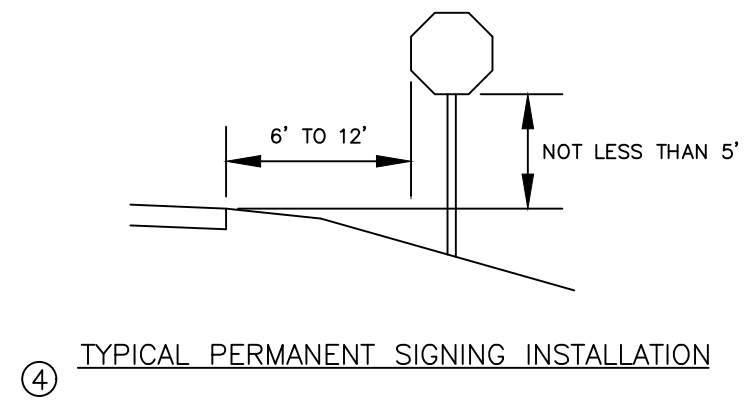
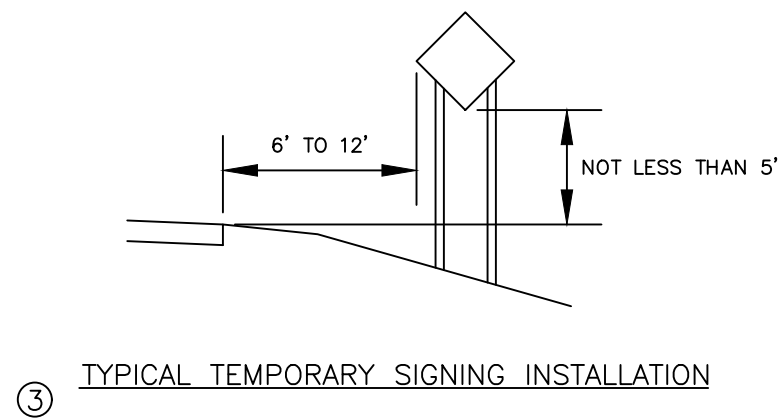
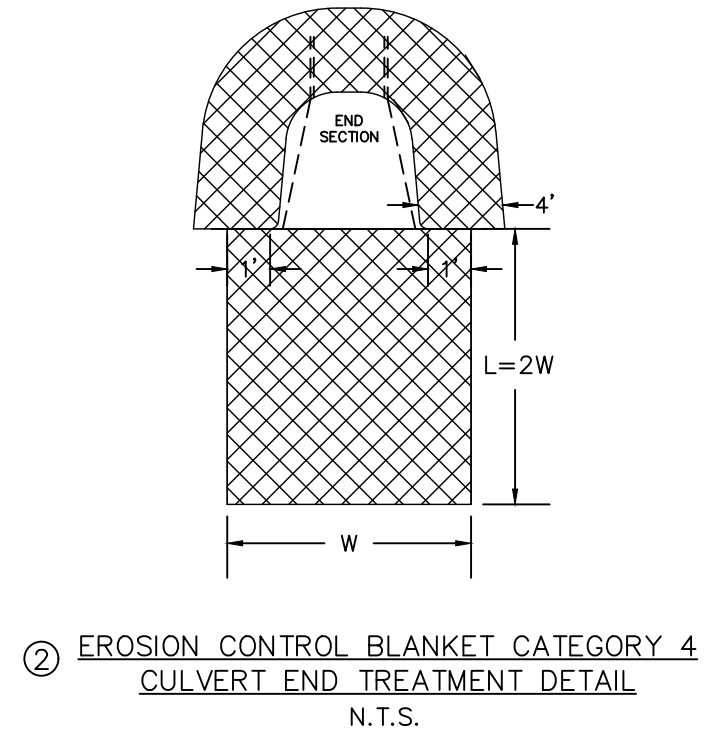
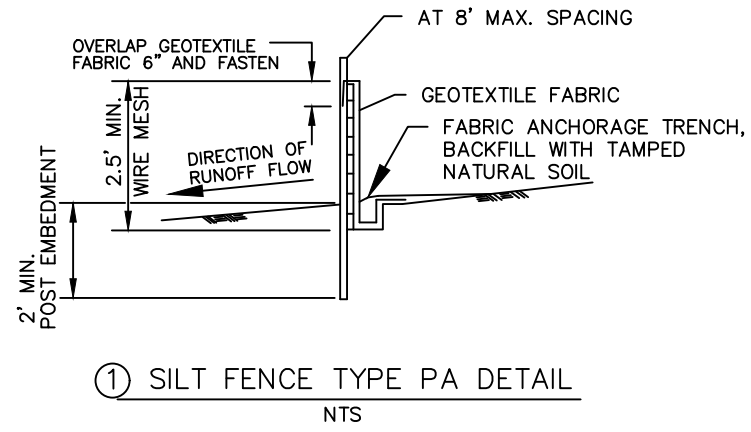
RESERVATION  
 MILLE LACS

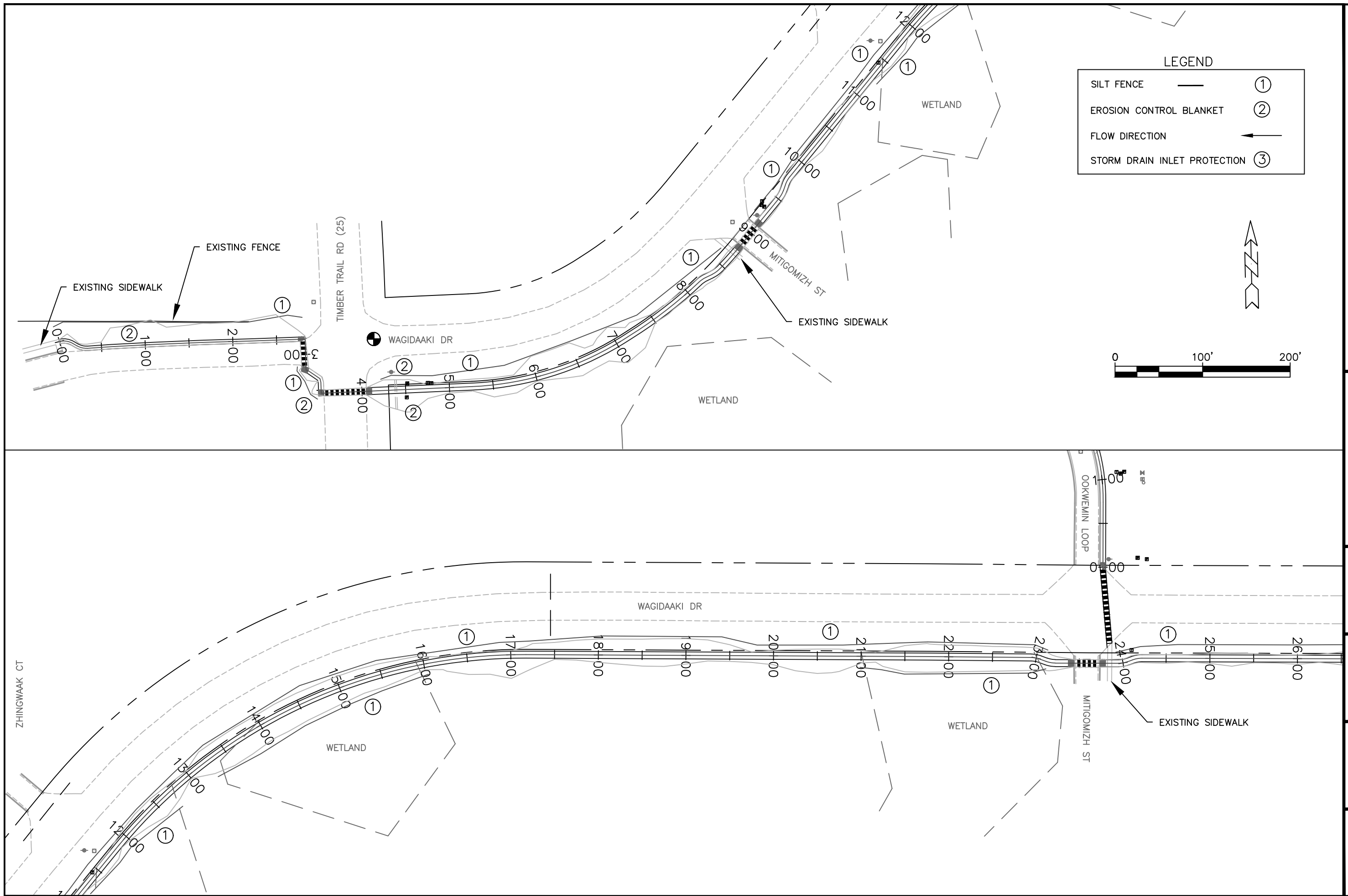
BIA REGION  
 MIDWEST

FED. ROAD REG. NO.  
 5

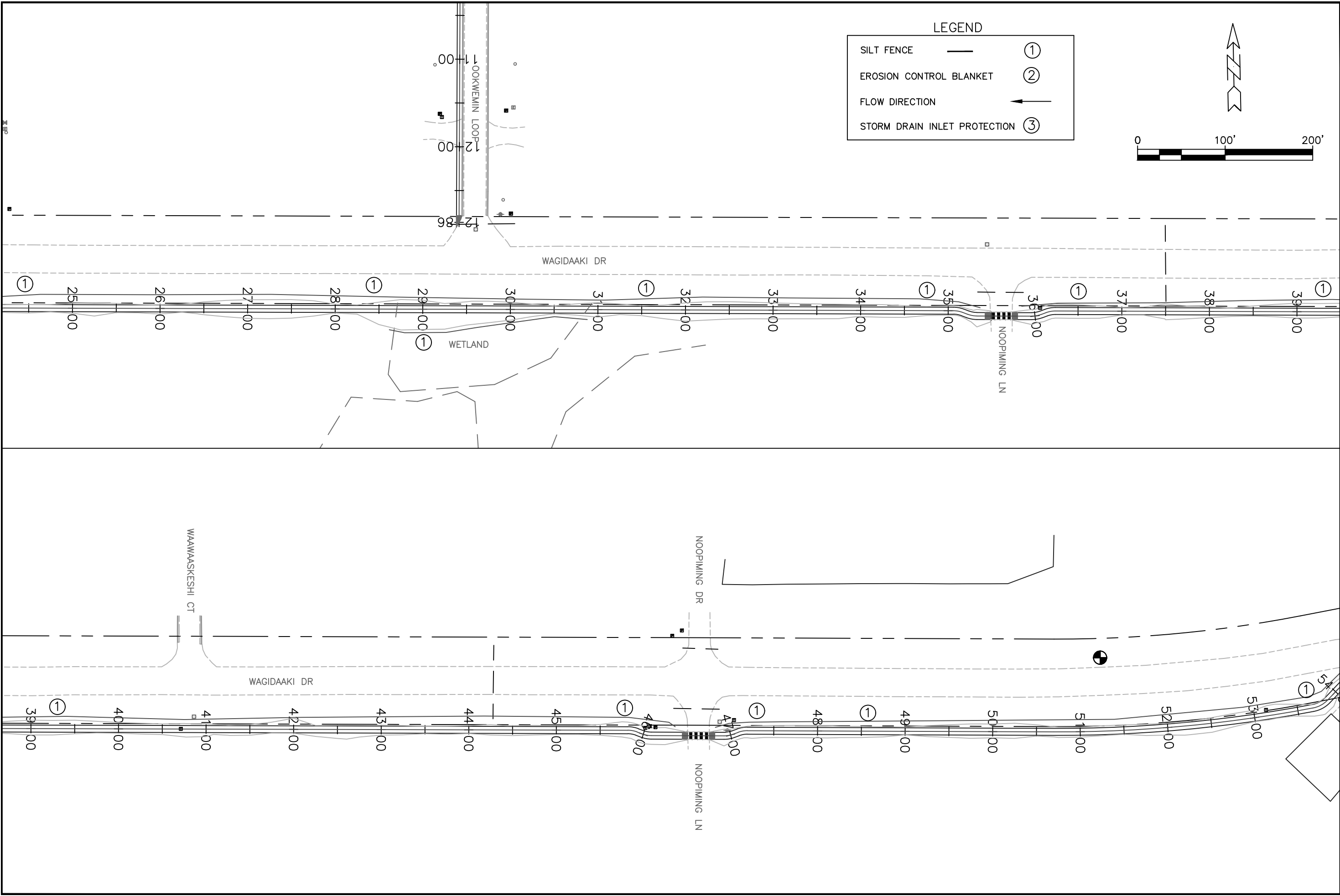
PROJECT I.D. NO.  
 F53-41029

SHEET NO.  
 5 of 63



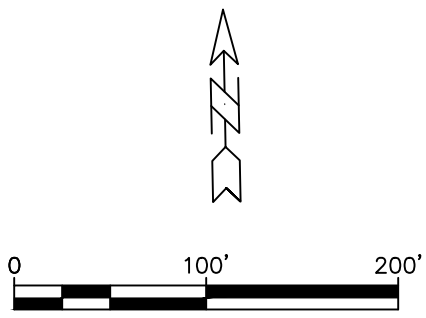


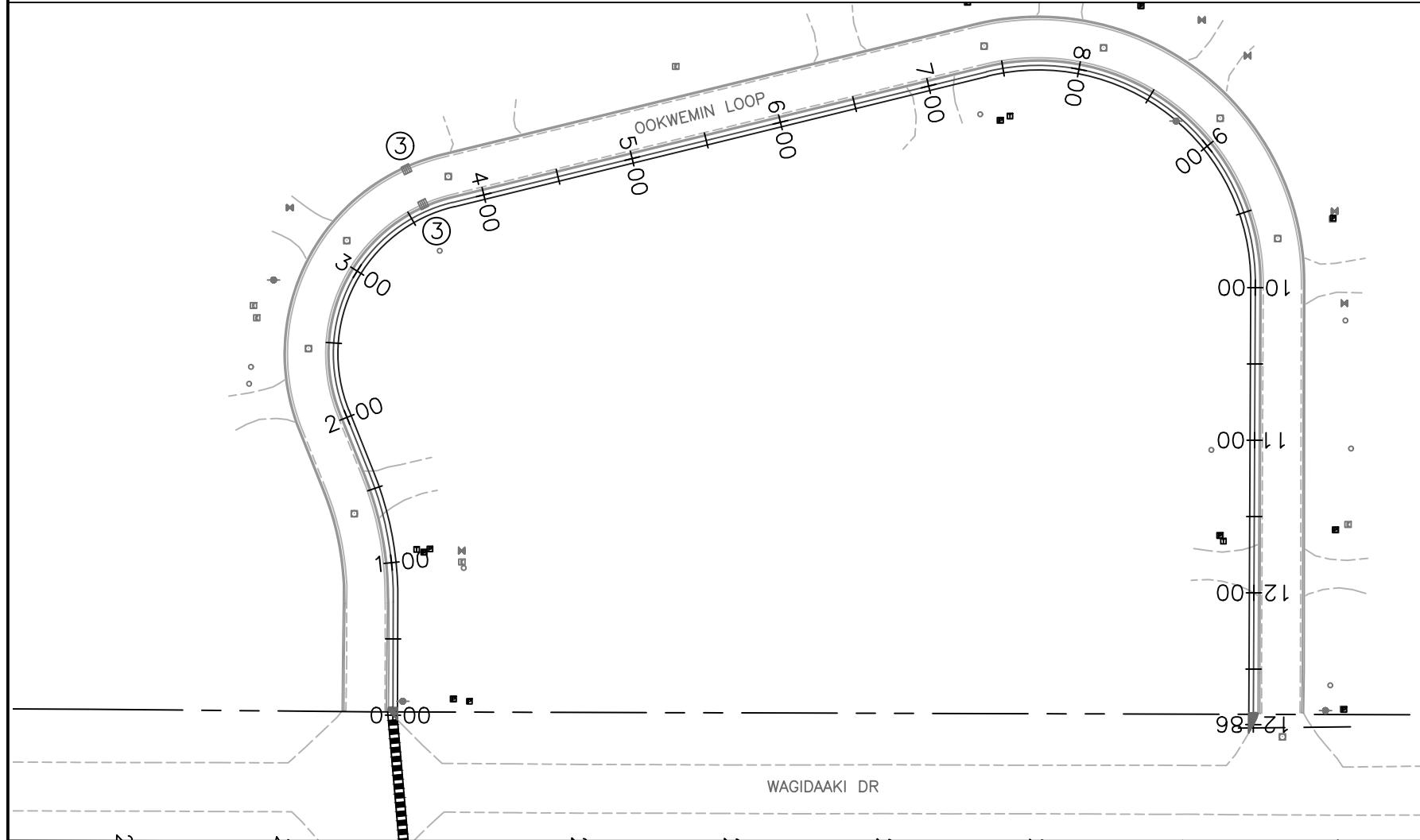
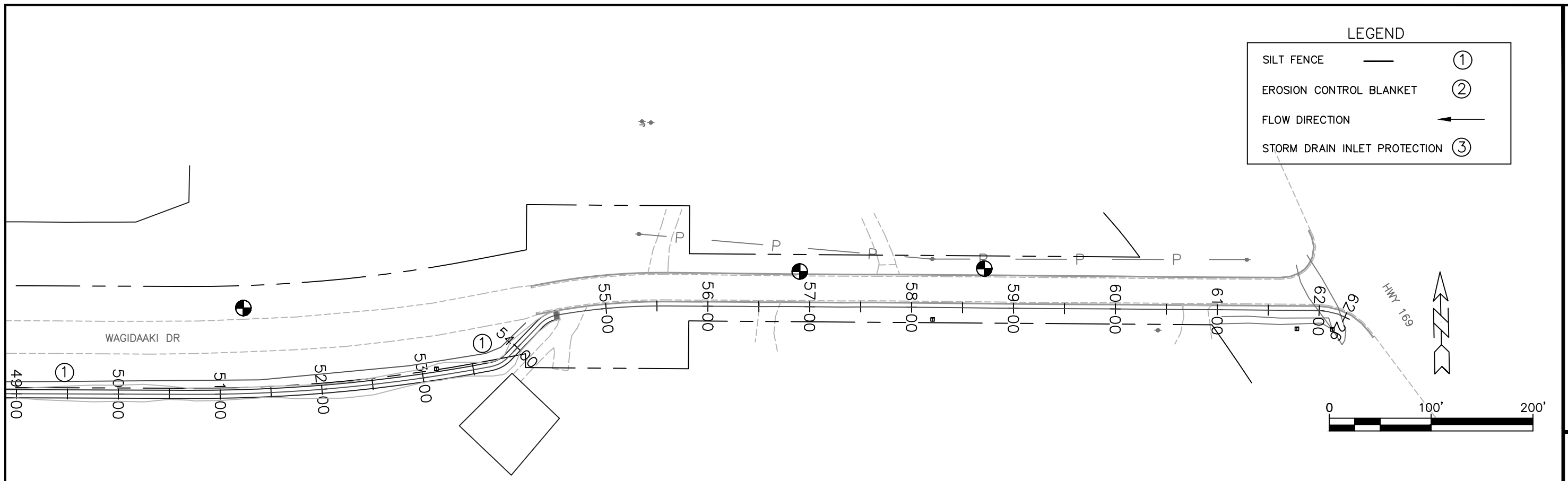
SHEET NO.	7 of 63
PROJECT I.D. NO.	F53-41029
FED. ROAD REG. NO.	5
BIA REGION	MIDWEST
RESERVATION	MILLE LACS
SHEET NAME	EROSION CONTROL 1



**LEGEND**

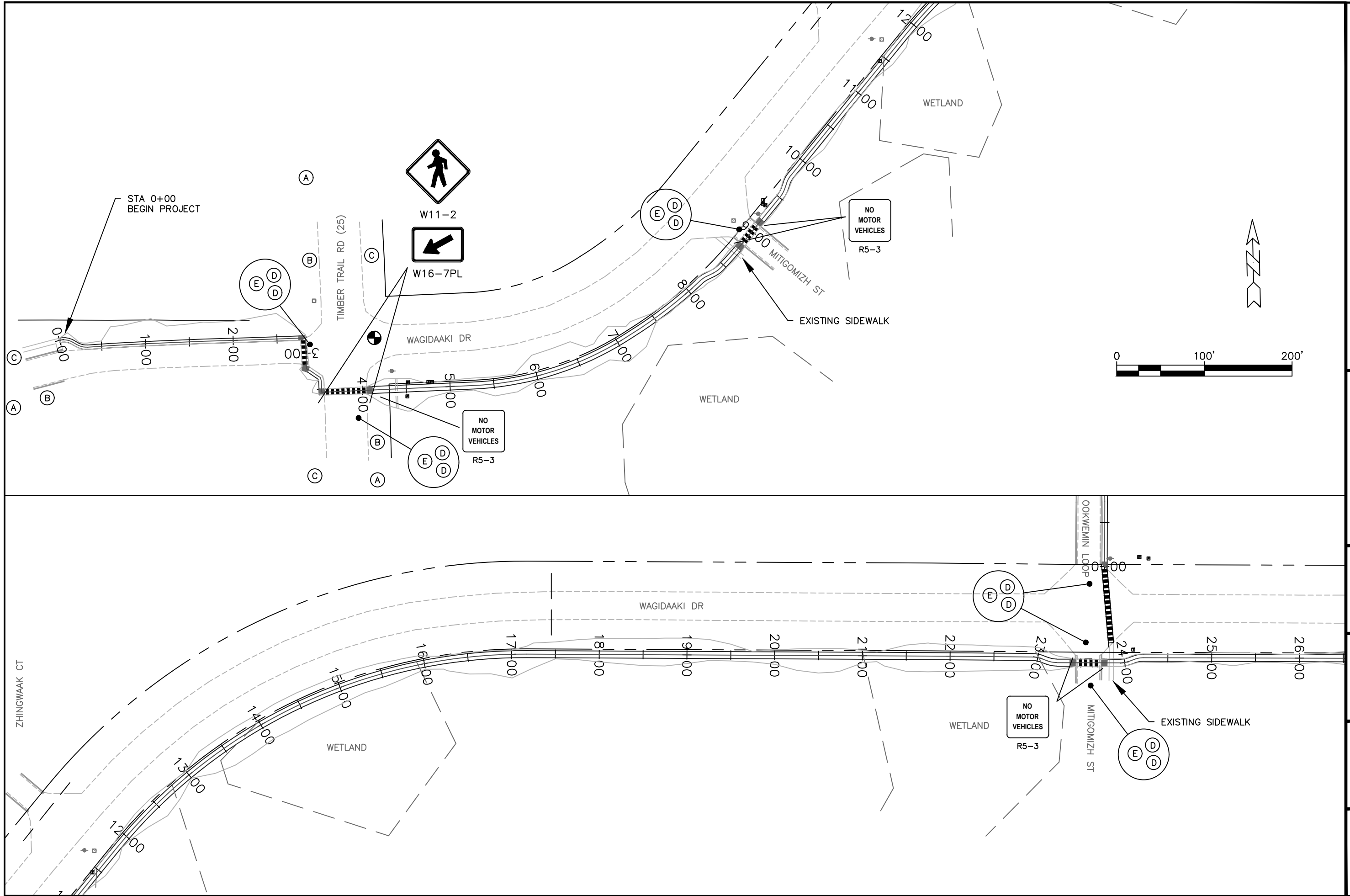
SILT FENCE	—	①
EROSION CONTROL BLANKET	—	②
FLOW DIRECTION	→	③
STORM DRAIN INLET PROTECTION	—	③





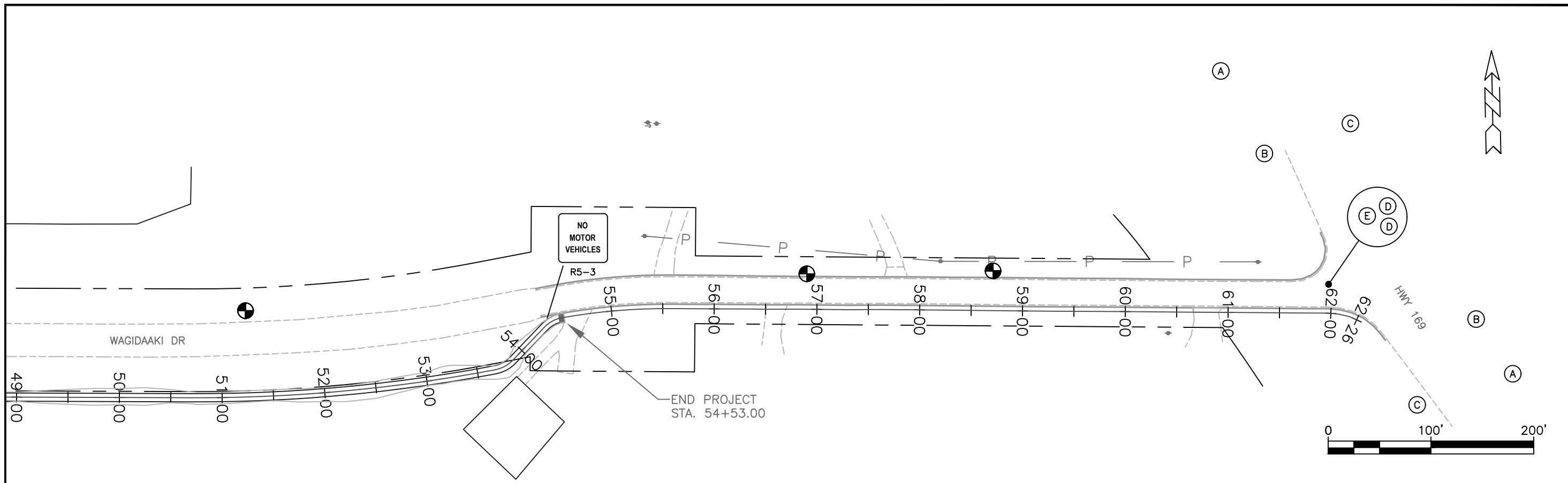
EROSION CONTROL SCHEDULE

STATION	LOCATION	PURPOSE	SILT FENCE TYPE PA (LIN FT)	EROSION CONTROL BLANKET CAT. 4 (SQ YD)	STORM INLET PROTECTION (EACH)
<b>WAGIDAANKI DR</b>					
0+00 TO 2+75	LT	EROSION CONTROL	275		
3+10 TO 3+50	RT	EROSION CONTROL	40		
4+25 TO 8+75	LT	EROSION CONTROL	450		
9+25 TO 23+25	LT	EROSION CONTROL	1400		
11+20 TO 12+75	RT	EROSION CONTROL	155		
13+25 TO 16+00	RT	EROSION CONTROL	275		
21+00 TO 23+15	RT	EROSION CONTROL	215		
24+00 TO 35+40	LT	EROSION CONTROL	1140		
28+60 TO 31+00	RT	EROSION CONTROL	240		
35+75 TO 46+50	LT	EROSION CONTROL	1075		
46+75 TO 54+25	LT	EROSION CONTROL	750		
<b>WAGIDAANKI DR</b>					
0+00 TO 2+75	LT	EROSION CONTROL		550	
3+10 TO 3+50	RT	EROSION CONTROL		50	
4+30 TO 4+50	LT & RT	EROSION CONTROL		100	
<b>OOKWEMIN LOOP</b>					
3+60	LT	INLET PROTECTION			2



SHEET NO.	10 of 63
PROJECT I.D. NO.	F53-41029
FED. ROAD REG. NO.	5
BIA REGION	MIDWEST
RESERVATION	MILLE LACS
SHEET NAME	SIGNING & TRAFFIC CONTROL 1





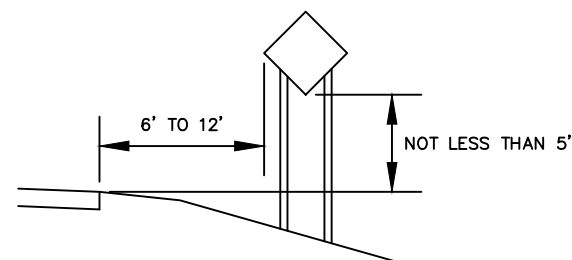
SIGN PANEL TYPE C SCHEDULE

STATION	DESCRIPTION	QTY.	MUTCD REFERENCE	SIZE	AREA (SQ FT)
3+54 RT	PEDESTRIAN CROSSING	1	W11-2	30" x 30"	6.3
3+54 RT	DIAGONAL DOWNWARD ARROW	1	W16-7PL	21" x 15"	2.2
4+11 RT	PEDESTRIAN CROSSING	1	W11-2	30" x 30"	6.3
4+11 RT	DIAGONAL DOWNWARD ARROW	1	W16-7PL	21" x 15"	2.2
4+15 RT	NO MOTOR VEHICLES	1	R5-3	24" x 24"	4.0
8+70 LT	NO MOTOR VEHICLES	1	R5-3	24" x 24"	4.0
9+21 RT	NO MOTOR VEHICLES	1	R5-3	24" x 24"	4.0
23+34 LT	NO MOTOR VEHICLES	1	R5-3	24" x 24"	4.0
23+84 RT	NO MOTOR VEHICLES	1	R5-3	24" x 24"	4.0
35+40 LT	NO MOTOR VEHICLES	1	R5-3	24" x 24"	4.0
35+85 RT	NO MOTOR VEHICLES	1	R5-3	24" x 24"	4.0
46+16 LT	NO MOTOR VEHICLES	1	R5-3	24" x 24"	4.0
46+86 RT	NO MOTOR VEHICLES	1	R5-3	24" x 24"	4.0
54+35 LT	NO MOTOR VEHICLES	1	R5-3	24" x 24"	4.0
TOTAL					57.0

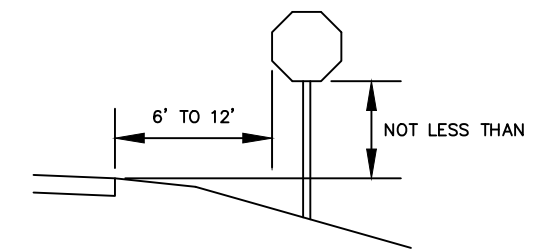
TEMPORARY TRAFFIC CONTROL SCHEDULE

INSTALLATION CODE	(A)	(B)	(C)	(D)	(E)
QUANTITY	5	5	5	24	12
MUTCD REFERENCE	W20-1	W20-1	G20-2	TYPE III BARRICADE	R11-3
SIZE	48" x 48"	48" x 48"	60" x 24"	8' WIDE	60" x 30"
SIGN					
NOTES	PLACE 1000 FT FROM INTERSECTION	PLACE 500 FT FROM INTERSECTION	PLACE 500 FT FROM INTERSECTION	PLACE TWO AT EACH MAIN INTERSECTION	INSTALL ON 8' WIDE TYPE III BARRICADE AT EACH MAIN INTERSECTION

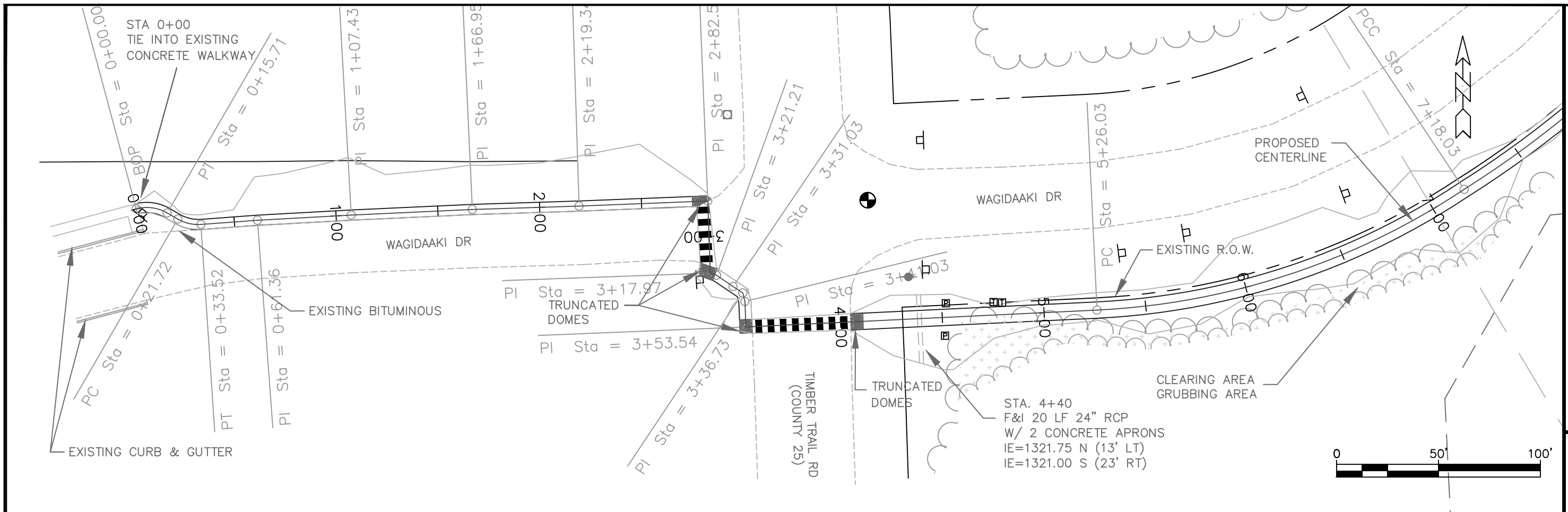
NOTE: ALL TRAFFIC CONTROL DEVICES SHALL CONFORM TO THE CURRENT MUTCD. IN ADDITION TO THESE DEVICES, THE CONTRACTOR IS REQUIRED TO IDENTIFY HAZARDOUS WORK AREAS AND SIGN THEM IN ACCORDANCE WITH THE MUTCD.



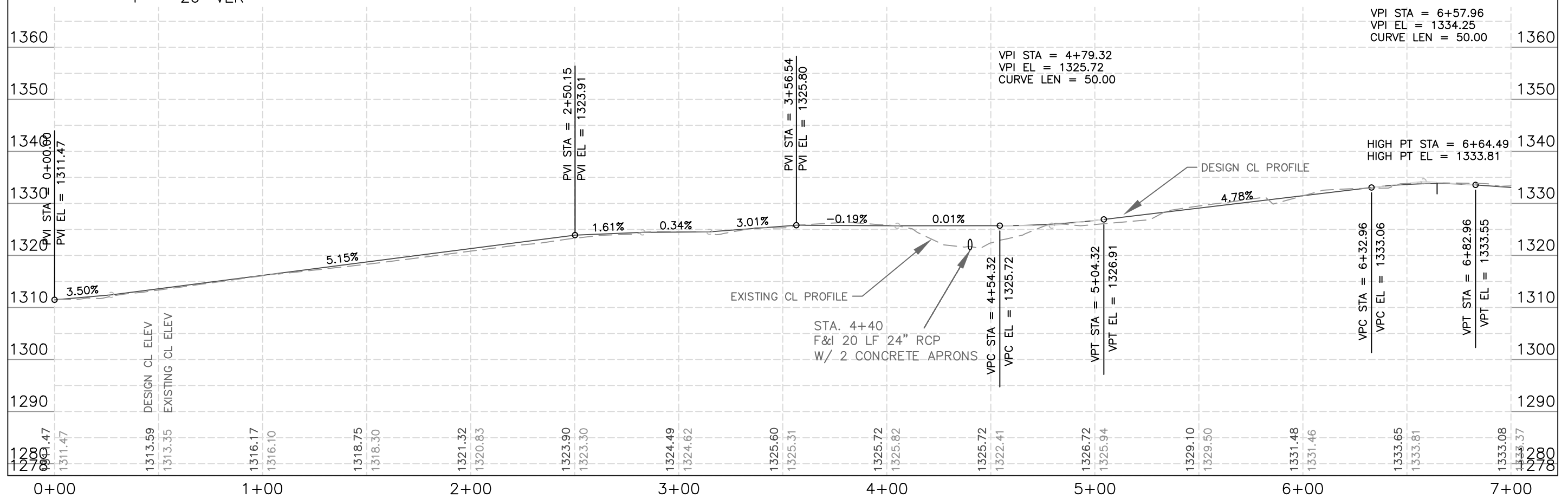
TYPICAL TEMPORARY SIGNING INSTALLATION



TYPICAL PERMANENT SIGNING INSTALLATION



1" = 50' HOR  
1" = 20' VER



SHEET NAME

PLPR28-0+00.00 TO 7+00.00

RESERVATION

MILLE LACS

BIA REGION

MIDWEST

FED. ROAD REG. NO.

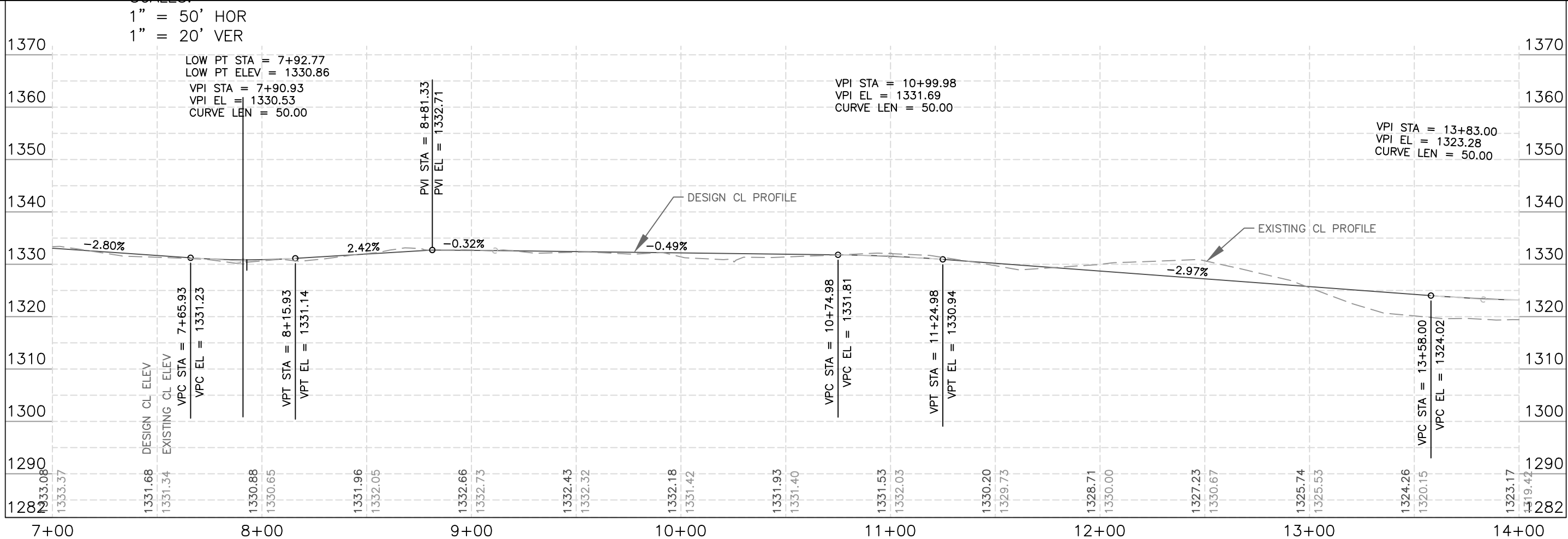
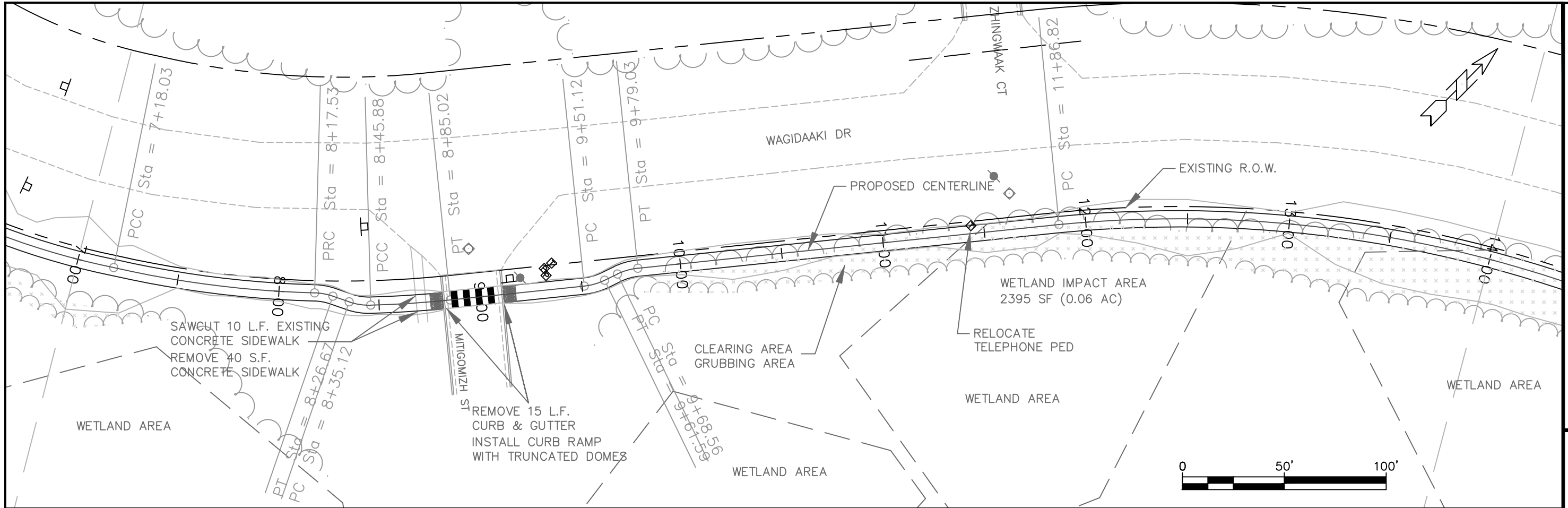
5

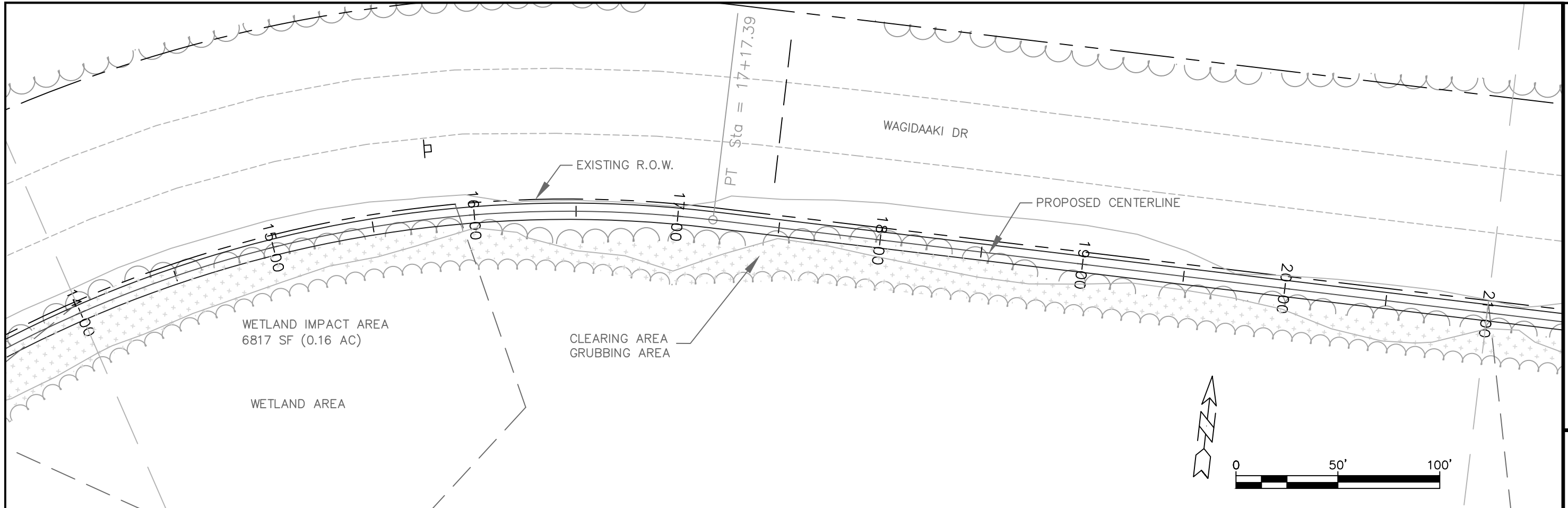
PROJECT I.D. NO.

F53-41029

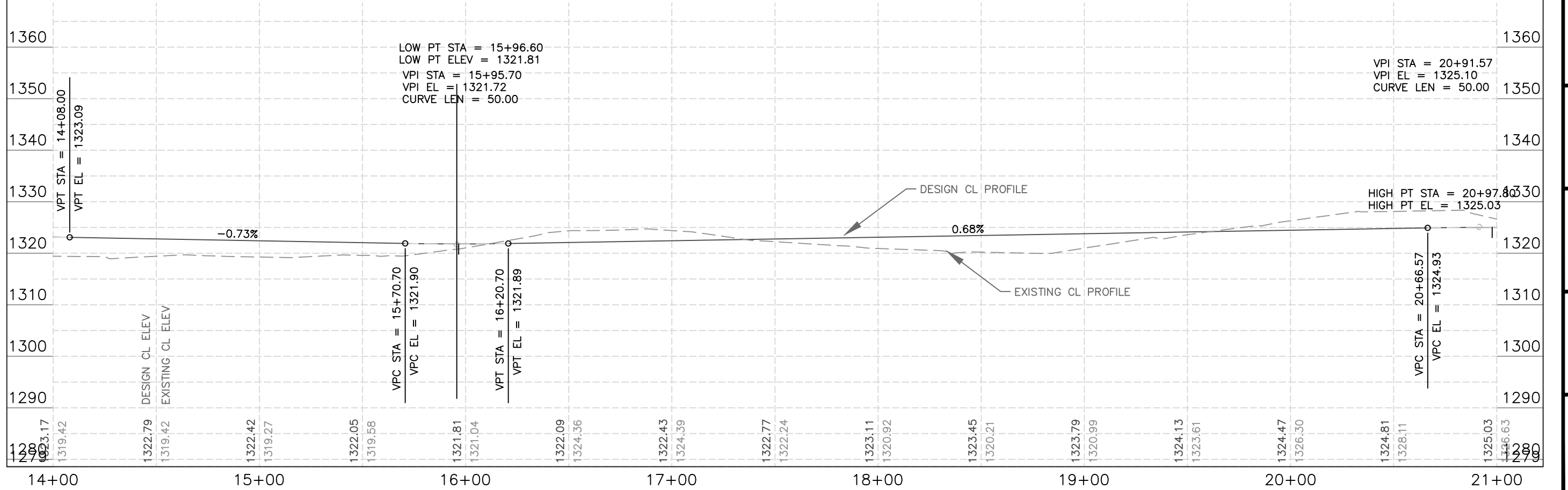
SHEET NO.

13 of 63





1" = 50' HOR  
1" = 20' VER



SHEET NAME

PLPR30-14+00.00 TO 21+00.00

RESERVATION

MILLE LACS

BIA REGION

MIDWEST

FED. ROAD REG. NO.

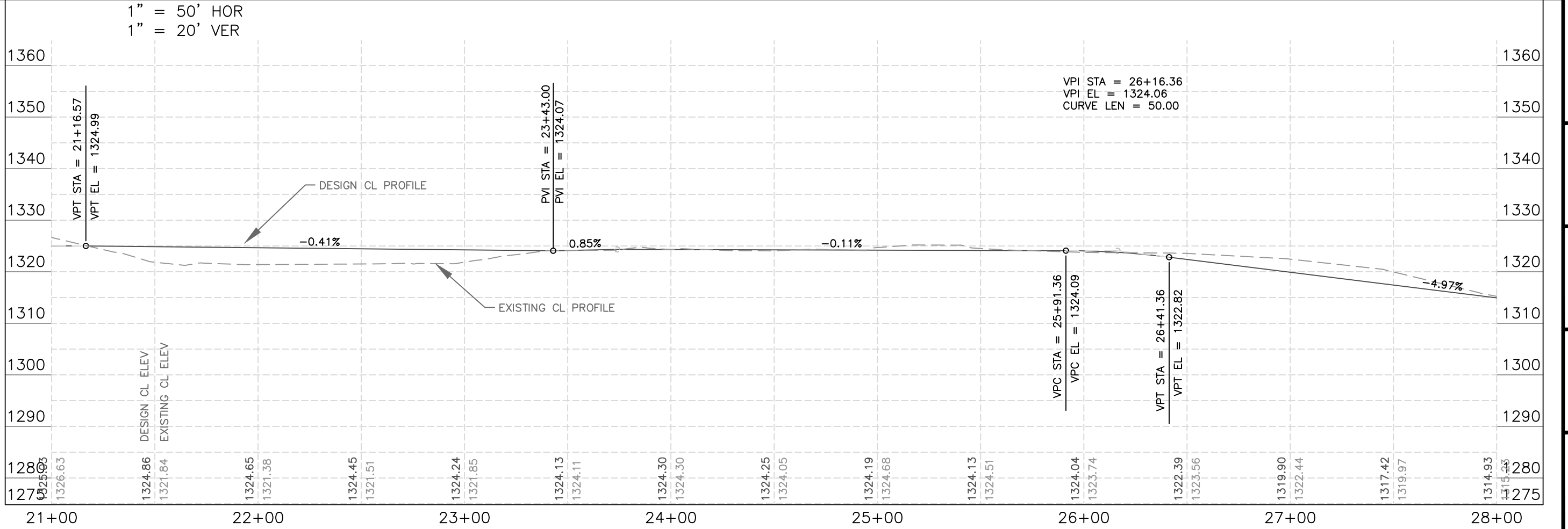
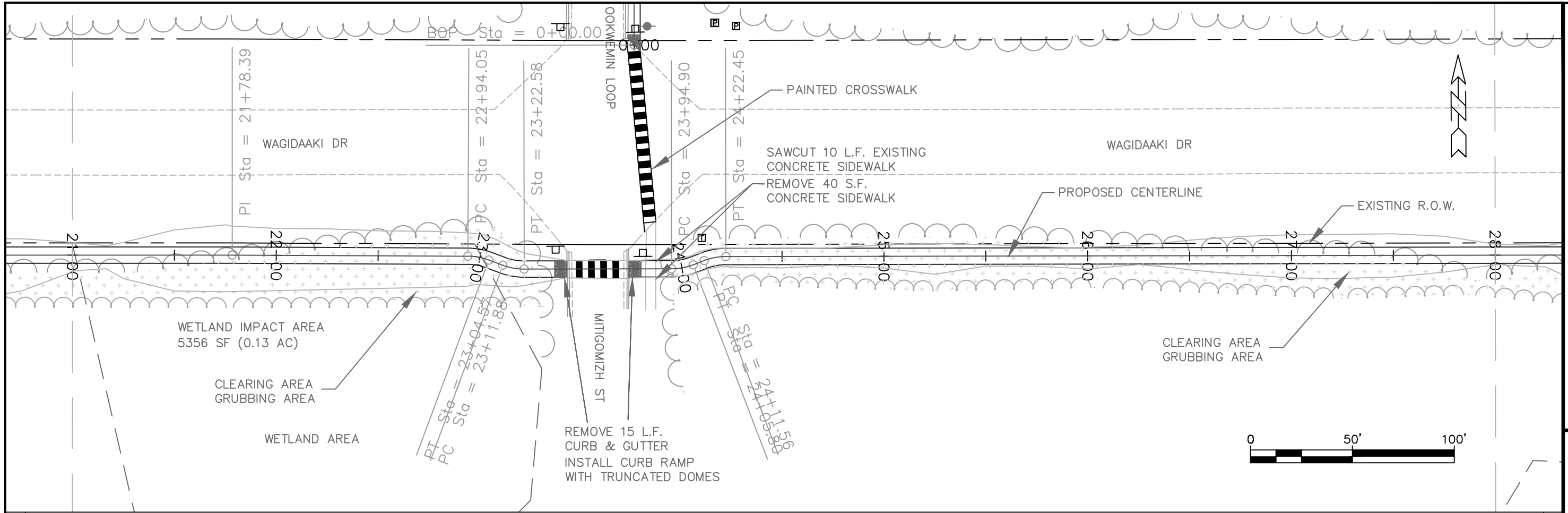
5

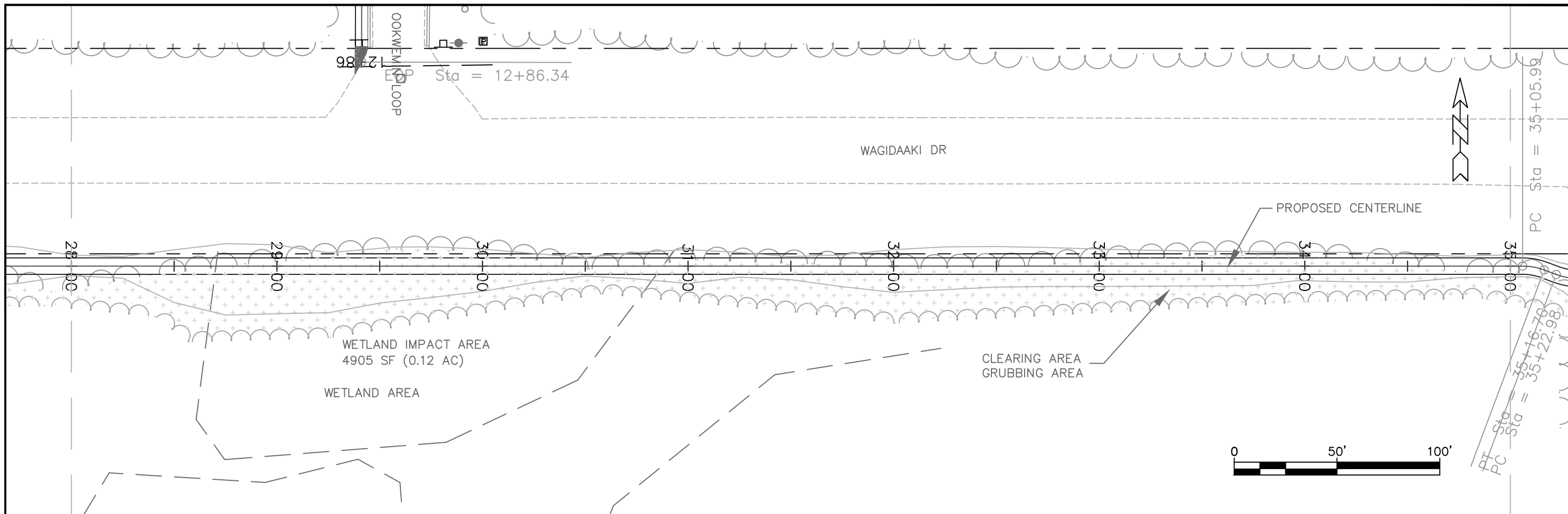
PROJECT I.D. NO.

F53-41029

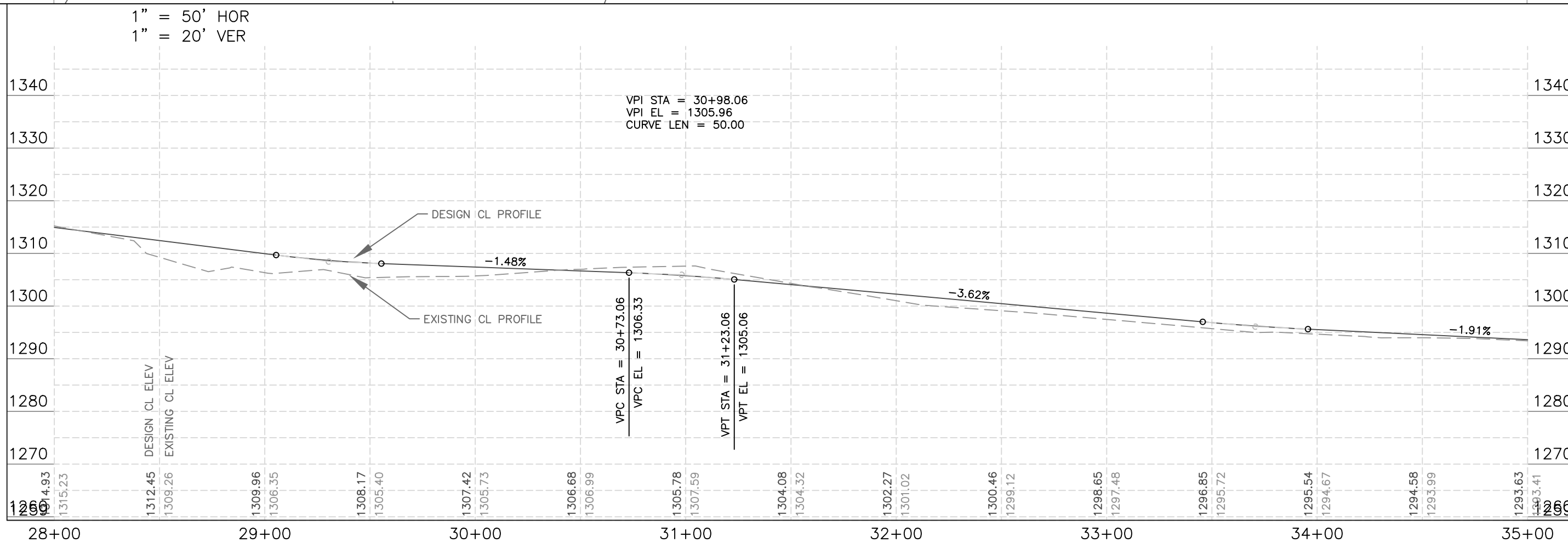
SHEET NO.

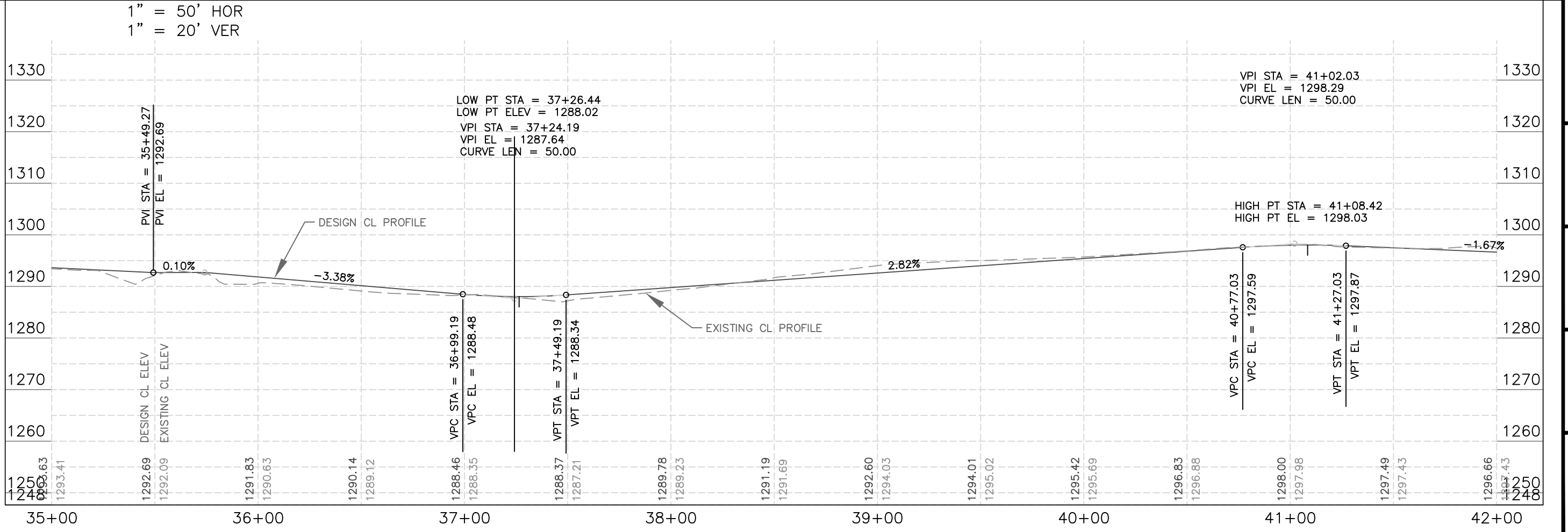
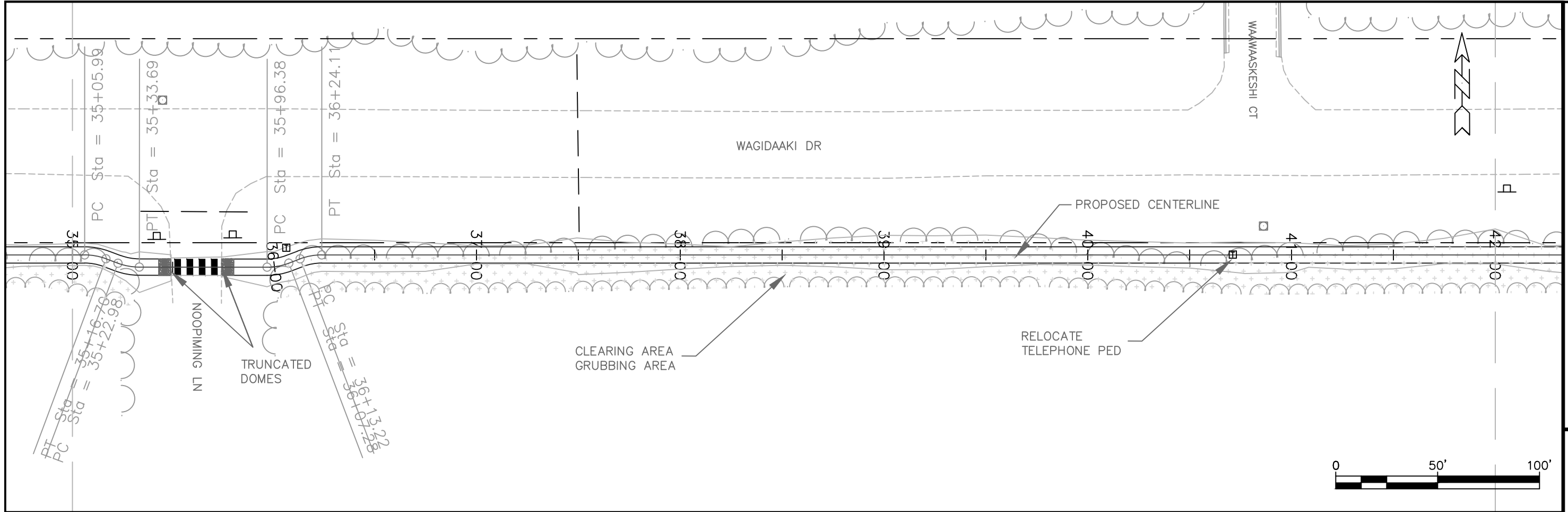
15 of 63

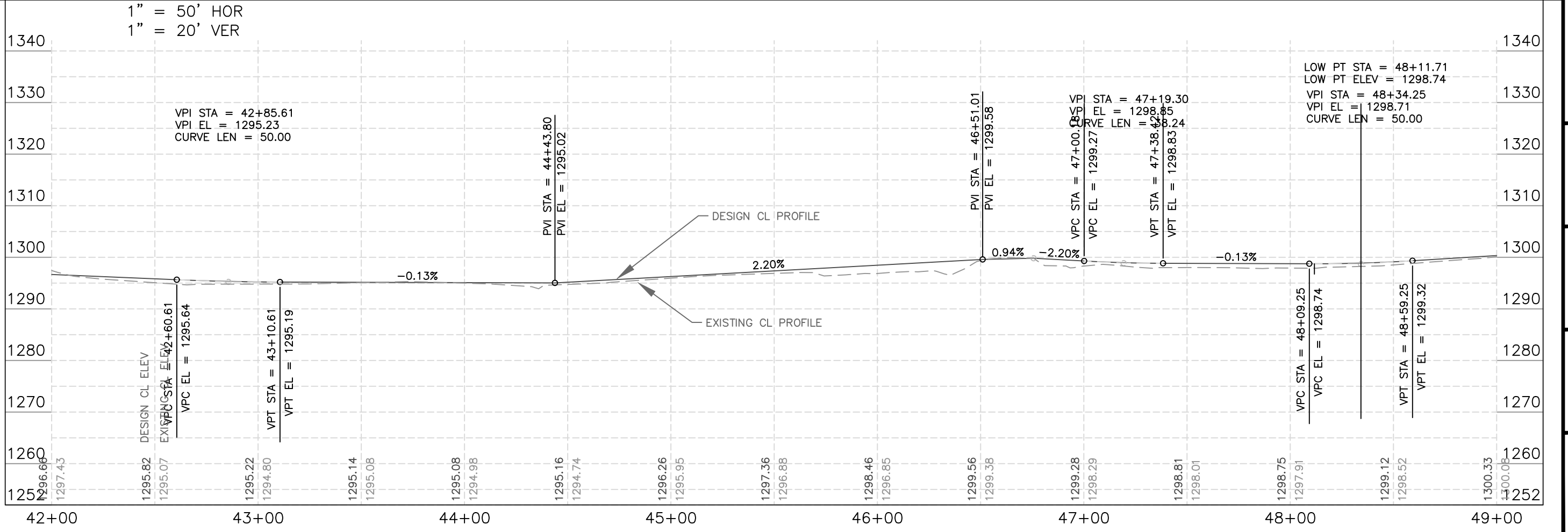
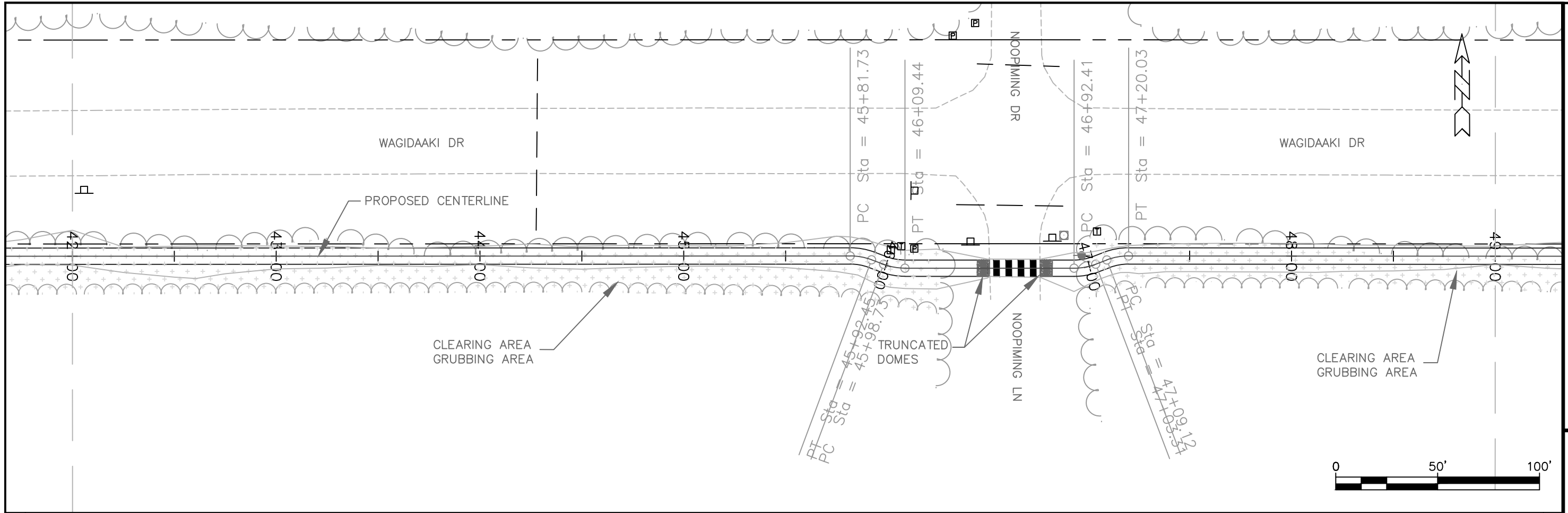


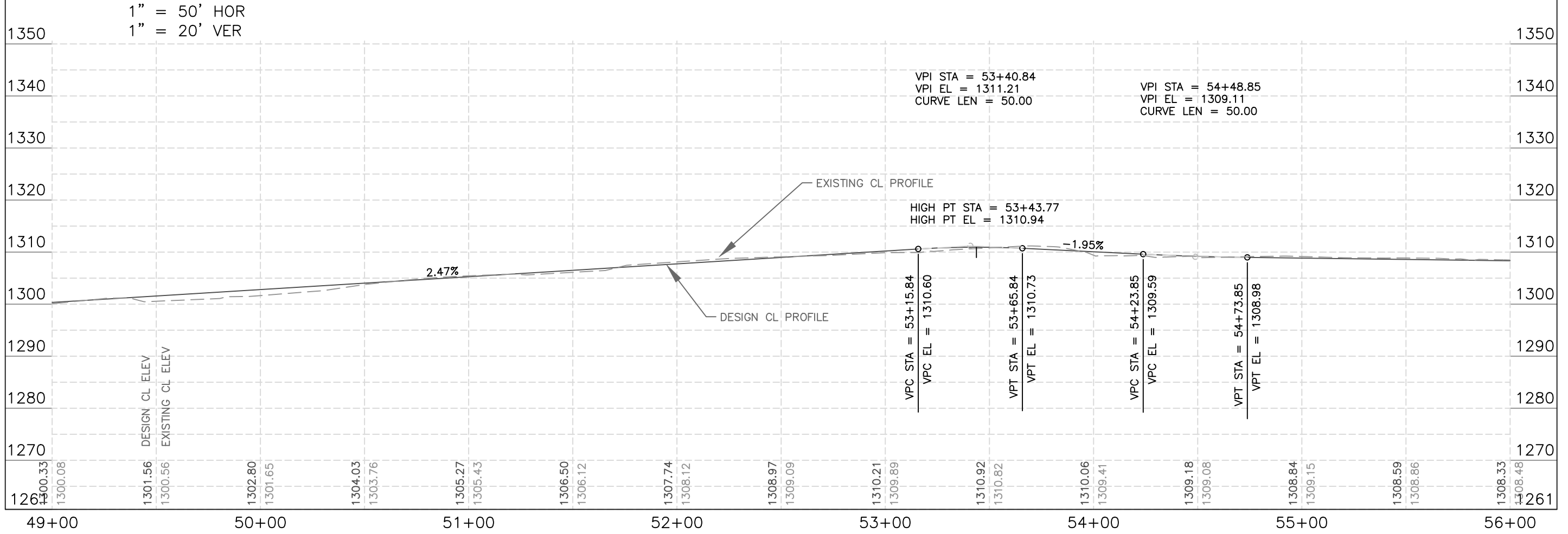
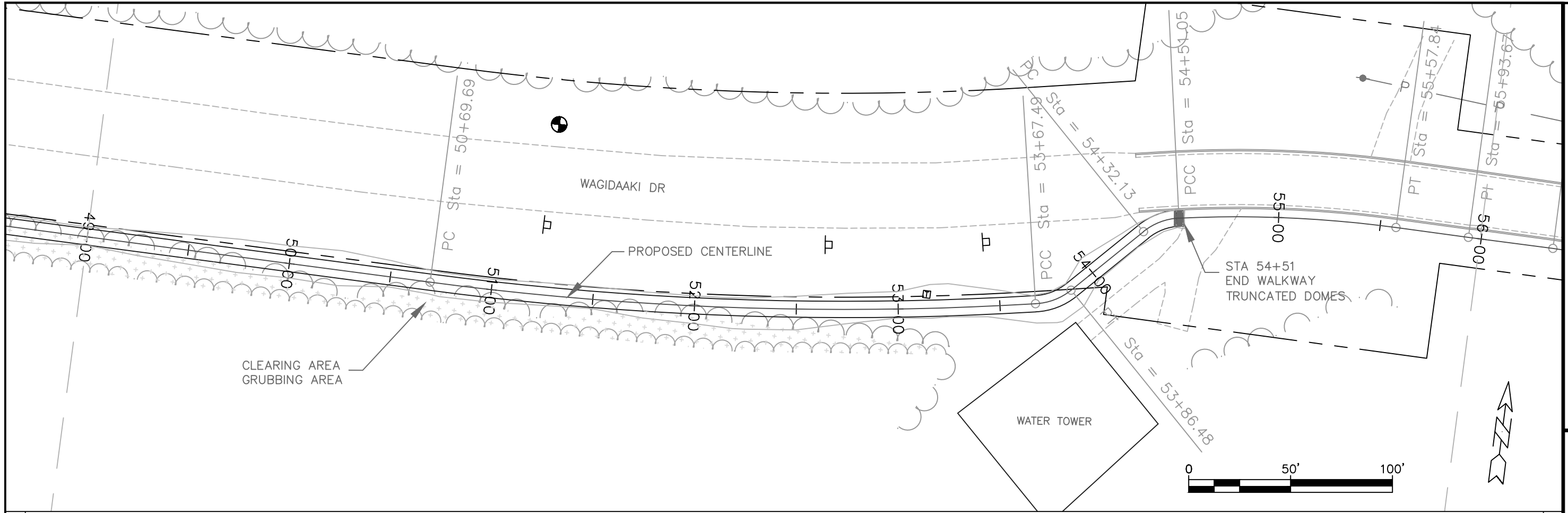


1" = 50' HOR  
1" = 20' VER









SHEET NAME

PLPR35-49+00.00 TO 56+00.00

RESERVATION

MILLE LACS

BIA REGION

MIDWEST

FED. ROAD REG. NO.

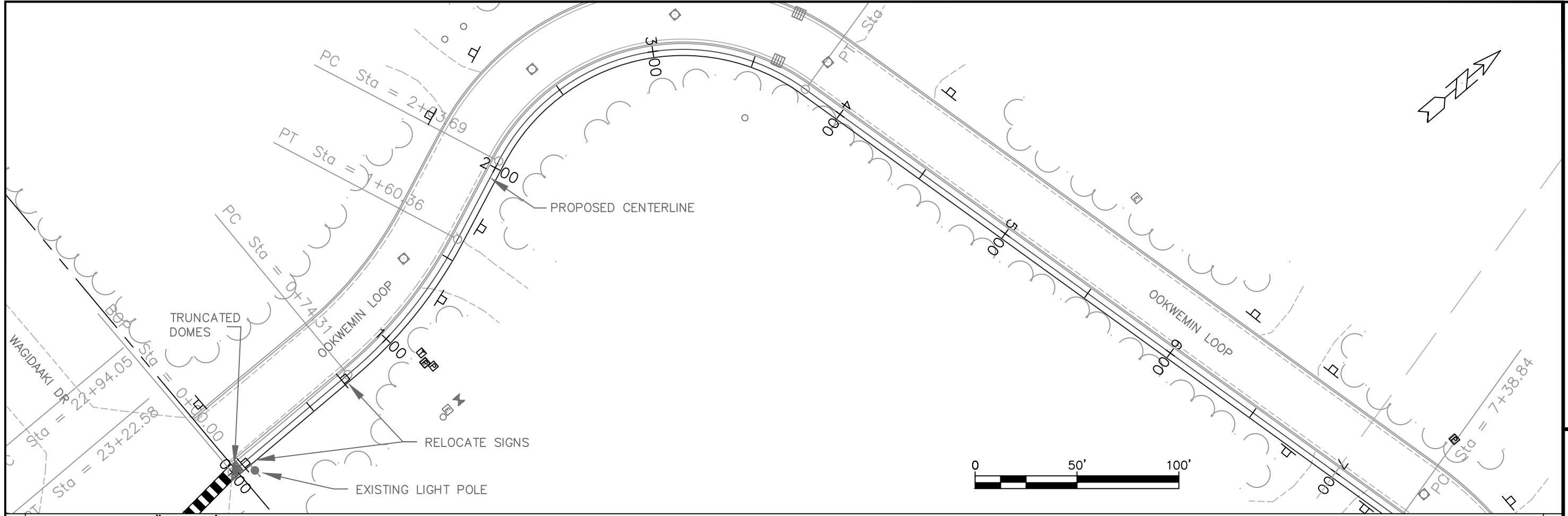
5

PROJECT I.D. NO.

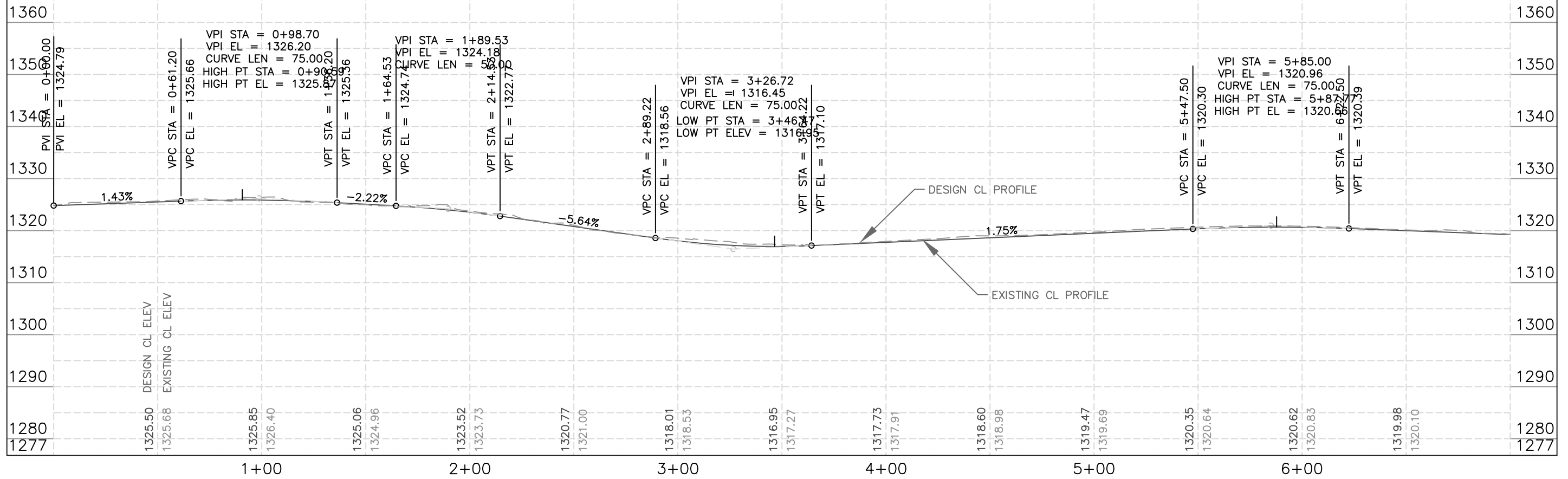
F53-41029

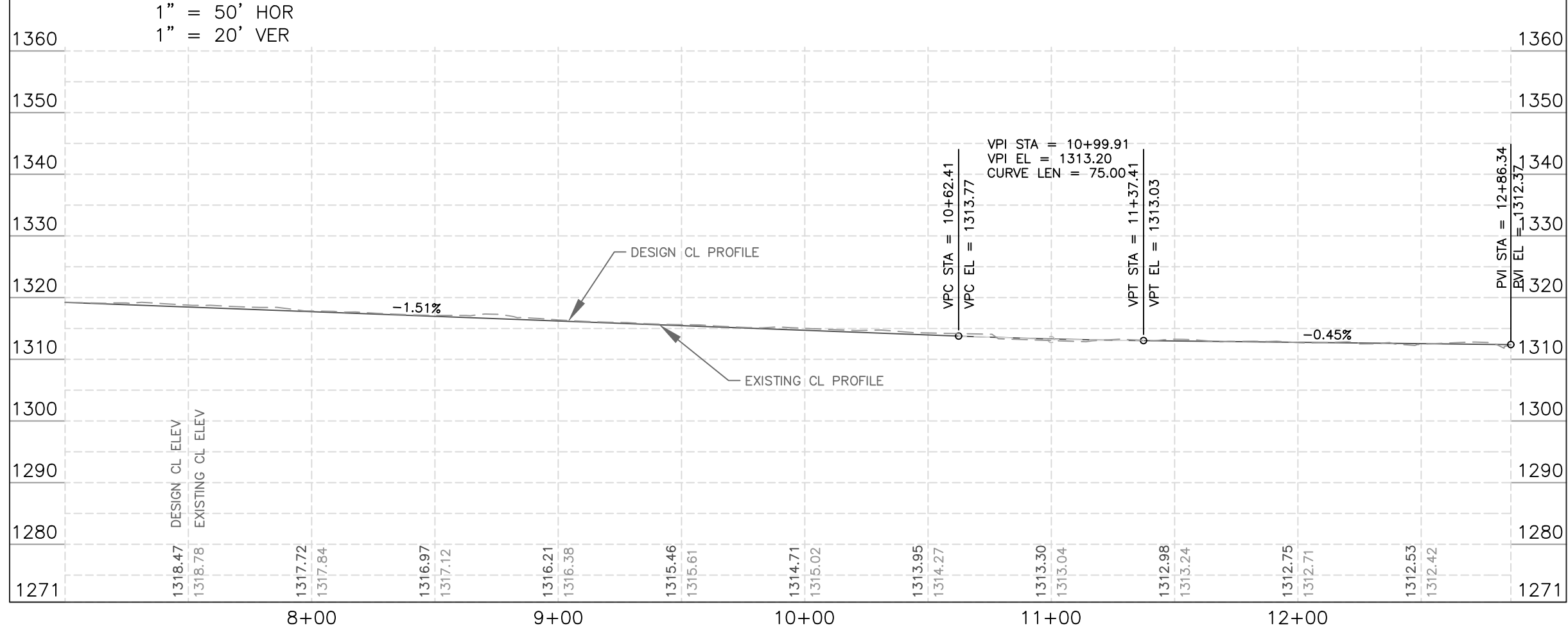
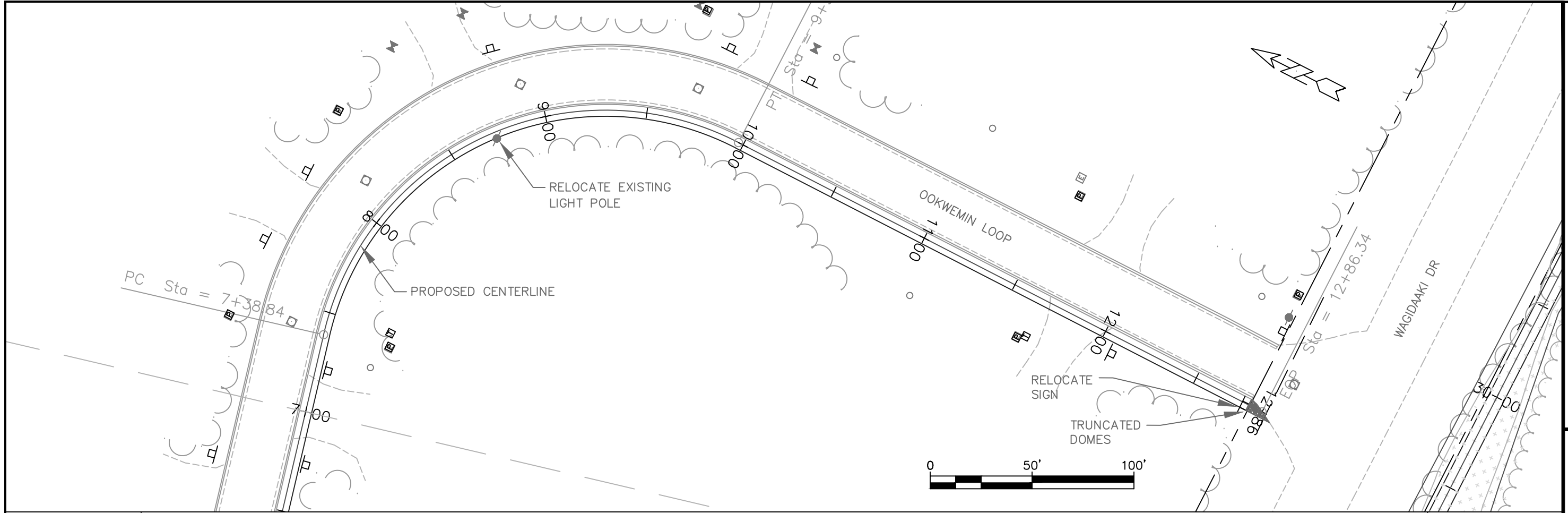
SHEET NO.

20 of 63



1" = 50' HOR  
1" = 20' VER





1" = 50' HOR  
1" = 20' VER